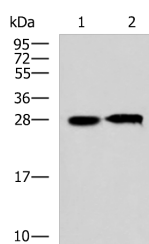


CCDC134 Polyclonal Antibody

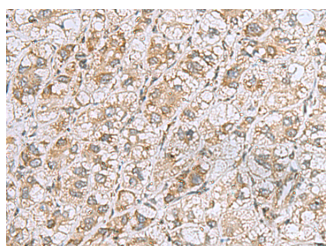
Catalog No.	E-AB-19180	Reactivity	H,M,R
Storage	Store at -20°C. Avoid freeze / thaw cycles.	Host	Rabbit
Applications	WB,IHC,ELISA	Isotype	IgG

Note: Centrifuge before opening to ensure complete recovery of vial contents.

Images



Western blot analysis of 293T cell lysates using CCDC134 Polyclonal Antibody at dilution of 1:800



Immunohistochemistry of paraffin-embedded Human liver cancer tissue using CCDC134 Polyclonal Antibody at dilution of 1:50(x200)

Immunogen Information

Immunogen	Fusion protein of human CCDC134
Gene Accession	BC017693
Swissprot	Q9H6E4
Synonyms	CC134_HUMAN,ccdc134,coiled-coil domain containing 134,Coiled-coil domain-containing protein 134,dJ821D11.3,FLJ22349,MGC21013

Product Information

Calculated MW	27 kDa
Observed MW	Refer to figures
Buffer	PBS with 0.05% NaN ₃ and 40% Glycerol,pH7.4
Purify	Antigen affinity purification
Dilution	WB 1:1000-1:5000, IHC 1:50-1:200, ELISA 1:5000-1:10000

Background

CCDC134 (Coiled-Coil Domain Containing 134) is a Protein Coding gene.

For Research Use Only

Thank you for your recent purchase.
 If you would like to learn more about antibodies, please visit www.elabscience.com.

**Focus on your research
 Service for life science**

Applications:WB-Western Blot IHC-Immunohistochemistry IF-Immunofluorescence IP-Immunoprecipitation FC-Flow cytometry ChIP-Chromatin Immunoprecipitation Reactivity: H-Human R-Rat M-Mouse Mk-Monkey Dg-Dog Ch-Chicken Hm-Hamster Rb-Rabbit Sh-Sheep Pg-Pig Z-Zebrafish X-Xenopus C-Cow.