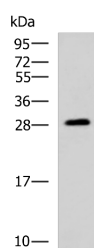


PAFAH1B3 Polyclonal Antibody

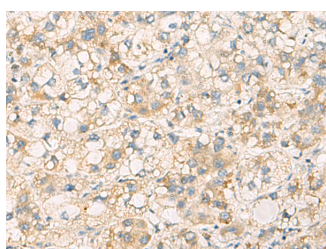
Catalog No.	E-AB-19183	Reactivity	H,M,R
Storage	Store at -20°C. Avoid freeze / thaw cycles.	Host	Rabbit
Applications	WB,IHC,ELISA	Isotype	IgG

Note: Centrifuge before opening to ensure complete recovery of vial contents.

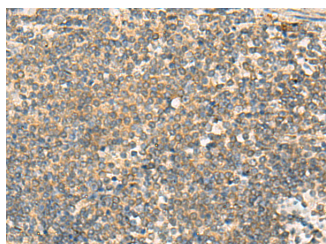
Images



Western blot analysis of Human fetal brain tissue lysate using PAFAH1B3 Polyclonal Antibody at dilution of 1:1000



Immunohistochemistry of paraffin-embedded Human liver cancer tissue using PAFAH1B3 Polyclonal Antibody at dilution of 1:70(x200)



Immunohistochemistry of paraffin-embedded Human colorectal cancer tissue using PAFAH1B3 Polyclonal Antibody at dilution of 1:70(x200)

Immunogen Information

Immunogen	Fusion protein of human PAFAH1B3
Gene Accession	BC003016
Swissprot	Q15102
Synonyms	PA1B3,PAF acetylhydrolase 29 kDa subunit,PAF AH 29 kDa subunit

Product Information

Calculated MW	26 kDa
Observed MW	Refer to figures
Buffer	PBS with 0.05% NaN ₃ and 40% Glycerol,pH7.4
Purify	Antigen affinity purification
Dilution	WB 1:1000-1:5000, IHC 1:50-1:200, ELISA 1:5000-1:10000

Background

This gene encodes an acetylhydrolase that catalyzes the removal of an acetyl group from the glycerol backbone of platelet-activating factor. The encoded enzyme is a subunit of the platelet-activating factor acetylhydrolase isoform 1B complex, which consists of the catalytic beta and gamma subunits and the regulatory alpha subunit. This complex functions in brain development. A translocation between this gene on chromosome 19 and the CDC-like kinase 2 gene on chromosome 1 has been observed, and was associated with cognitive disability, ataxia, and atrophy of the brain. Alternatively spliced transcript variants have been described.

For Research Use Only

Thank you for your recent purchase.
 If you would like to learn more about antibodies, please visit www.elabscience.com.

**Focus on your research
 Service for life science**

Applications:WB-Western Blot IHC-Immunohistochemistry IF-Immunofluorescence IP-Immunoprecipitation FC-Flow cytometry ChIP-Chromatin Immunoprecipitation Reactivity: H-Human R-Rat M-Mouse Mk-Monkey Dg-Dog Ch-Chicken Hm-Hamster Rb-Rabbit Sh-Sheep Pg-Pig Z-Zebrafish X-Xenopus C-Cow.