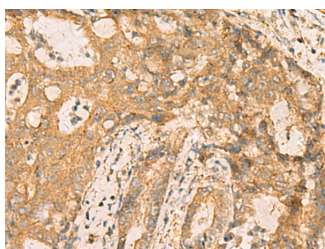


CNST Polyclonal Antibody

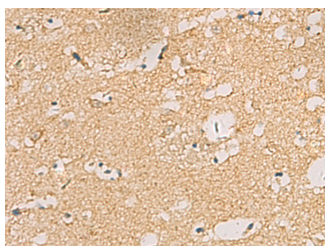
Catalog No.	E-AB-19205	Reactivity	H
Storage	Store at -20°C. Avoid freeze / thaw cycles.	Host	Rabbit
Applications	IHC,ELISA	Isotype	IgG

Note: Centrifuge before opening to ensure complete recovery of vial contents.

Images



Immunohistochemistry of paraffin-embedded Human cervical cancer tissue using CNST Polyclonal Antibody at dilution of 1:70(×200)



Immunohistochemistry of paraffin-embedded Human brain tissue using CNST Polyclonal Antibody at dilution of 1:70(×200)

Immunogen Information

Immunogen	Fusion protein of human CNST
Gene Accession	BC036200
Swissprot	Q6PJW8
Synonyms	C1orf71,CNST,CNST,Consortin,Consortin connexin sorting protein,PPP1R64,Protein phosphatase 1 regulatory subunit 64,RP11-452J6.1

Product Information

Buffer	PBS with 0.05% NaN ₃ and 40% Glycerol,pH7.4
Purify	Antigen affinity purification
Dilution	IHC 1:50-1:200, ELISA 1:5000-1:10000

Background

Targeting of numerous transmembrane proteins to the cell surface is thought to depend on their recognition by cargo receptors that interact with the adaptor machinery for anterograde traffic at the distal end of the Golgi complex. Consortin (CNST) is an integral membrane protein that acts as a binding partner of connexins, the building blocks of gap junctions, and acts as a trans-Golgi network (TGN) receptor involved in connexin targeting to the plasma membrane and recycling from the cell surface (del Castillo et al., 2010 [PubMed 19864490]).

For Research Use Only

Thank you for your recent purchase.
 If you would like to learn more about antibodies, please visit www.elabscience.com.

**Focus on your research
 Service for life science**

Applications:WB-Western Blot IHC-Immunohistochemistry IF-Immunofluorescence IP-Immunoprecipitation FC-Flow cytometry ChIP-Chromatin Immunoprecipitation Reactivity: H-Human R-Rat M-Mouse Mk-Monkey Dg-Dog Ch-Chicken Hm-Hamster Rb-Rabbit Sh-Sheep Pg-Pig Z-Zebrafish X-Xenopus C-Cow.