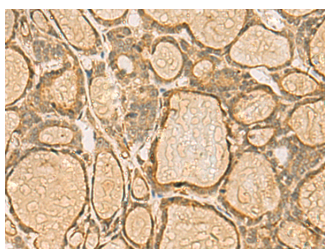


HORMAD2 Polyclonal Antibody

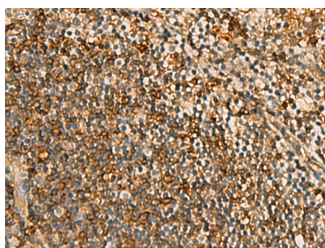
Catalog No.	E-AB-19220	Reactivity	H
Storage	Store at -20°C. Avoid freeze / thaw cycles.	Host	Rabbit
Applications	IHC,ELISA	Isotype	IgG

Note: Centrifuge before opening to ensure complete recovery of vial contents.

Images



Immunohistochemistry of paraffin-embedded Human thyroid cancer tissue using HORMAD2 Polyclonal Antibody at dilution of 1:45(×200)



Immunohistochemistry of paraffin-embedded Human tonsil tissue using HORMAD2 Polyclonal Antibody at dilution of 1:45(×200)

Immunogen Information

Immunogen	Fusion protein of human HORMAD2
Gene Accession	BC030013
Swissprot	Q8N7B1
Synonyms	4930529M09Rik,CT46.2,HORM2,HORMA domain containing 2,HORMA domain-containing protein 2,Hormad2,MGC26710,RP23-329P17.4

Product Information

Buffer	PBS with 0.05% NaN ₃ and 40% Glycerol,pH7.4
Purify	Antigen affinity purification
Dilution	IHC 1:50-1:200, ELISA 1:5000-1:10000

Background

Essential for synopsis surveillance during meiotic prophase via the recruitment of ATR activity. Plays a key role in the male mid-pachytene checkpoint and the female meiotic prophase checkpoint: required for efficient build-up of ATR activity on unsynapsed chromosome regions, a process believed to form the basis of meiotic silencing of unsynapsed chromatin (MSUC) and meiotic prophase quality control in both sexes. Required for the DNA double-strand break-independent, BRCA1-dependent activation of ATR on the sex chromosomes that is essential for normal sex body formation (By similarity).

For Research Use Only

Thank you for your recent purchase.
 If you would like to learn more about antibodies, please visit www.elabscience.com.

**Focus on your research
 Service for life science**

Applications:WB-Western Blot IHC-Immunohistochemistry IF-Immunofluorescence IP-Immunoprecipitation FC-Flow cytometry ChIP-Chromatin Immunoprecipitation Reactivity: H-Human R-Rat M-Mouse Mk-Monkey Dg-Dog Ch-Chicken Hm-Hamster Rb-Rabbit Sh-Sheep Pg-Pig Z-Zebrafish X-Xenopus C-Cow.