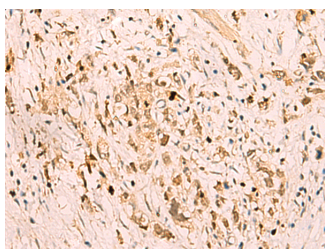


SGTA Polyclonal Antibody

Catalog No.	E-AB-19227	Reactivity	H,M,R
Storage	Store at -20°C. Avoid freeze / thaw cycles.	Host	Rabbit
Applications	IHC,ELISA	Isotype	IgG

Note: Centrifuge before opening to ensure complete recovery of vial contents.

Images



Immunohistochemistry of paraffin-embedded Human gastric cancer tissue using SGTA Polyclonal Antibody at dilution of 1:75(×200)

Immunogen Information

Immunogen	Fusion protein of human SGTA
Gene Accession	BC000390
Swissprot	O43765
Synonyms	Alpha SGT,Alpha-SGT,AlphaSGT,hSGT,SGT,Sgt1,SGTA,Stg,UBP,Vpu binding protein,Vpu-binding protein

Product Information

Buffer	PBS with 0.05% NaN ₃ and 40% Glycerol,pH7.4
Purify	Antigen affinity purification
Dilution	IHC 1:50-1:200, ELISA 1:5000-1:10000

Background

Small glutamine-rich tetratricopeptide repeat-containing protein alpha (SGTA) is a steroid receptor molecular co-chaperone critical in a range of biological processes,including viral infection,cell division,mitosis,and cell cycle checkpoint activation. Overexpression of SGTA has been found in various cancers,including prostate/ovary/testis/liver/lung cancer.

For Research Use Only

Thank you for your recent purchase.
 If you would like to learn more about antibodies,please visit www.elabscience.com.

**Focus on your research
 Service for life science**

Applications:WB-Western Blot IHC-Immunohistochemistry IF-Immunofluorescence IP-Immunoprecipitation FC-Flow cytometry ChIP-Chromatin Immunoprecipitation Reactivity: H-Human R-Rat M-Mouse Mk-Monkey Dg-Dog Ch-Chicken Hm-Hamster Rb-Rabbit Sh-Sheep Pg-Pig Z-Zebrafish X-Xenopus C-Cow.