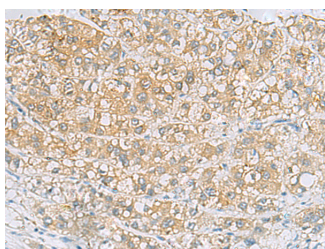


## EPCAM Polyclonal Antibody

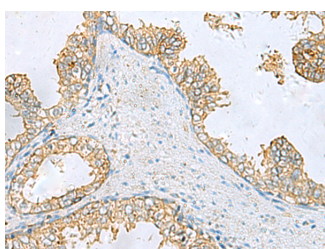
<b>Catalog No.</b>	E-AB-19229	<b>Reactivity</b>	H,M,R
<b>Storage</b>	Store at -20°C. Avoid freeze / thaw cycles.	<b>Host</b>	Rabbit
<b>Applications</b>	IHC,ELISA	<b>Isotype</b>	IgG

**Note:** Centrifuge before opening to ensure complete recovery of vial contents.

### Images



Immunohistochemistry of paraffin-embedded Human liver cancer tissue using EPCAM Polyclonal Antibody at dilution of 1:60(×200)



Immunohistochemistry of paraffin-embedded Human prostate cancer tissue using EPCAM Polyclonal Antibody at dilution of 1:60(×200)

### Immunogen Information

<b>Immunogen</b>	Fusion protein of human EPCAM
<b>Gene Accession</b>	BC014785
<b>Swissprot</b>	P16422
<b>Synonyms</b>	CO 17A,CO17 1A,CO17A,DIAR5,EGP 2,EGP,EGP2,EGP314,EGP40,Ep CAM,Ep-CAM,EPCAM,EPCAM,EpCAM1,M1S 1,M1S2,M4S1

### Product Information

<b>Buffer</b>	PBS with 0.05% NaN <sub>3</sub> and 40% Glycerol,pH7.4
<b>Purify</b>	Antigen affinity purification
<b>Dilution</b>	IHC 1:50-1:200, ELISA 1:5000-1:10000

### Background

Epithelial cell adhesion molecule (EpCAM,CD326) is a type I transmembrane glycoprotein that functions as a homophilic, epithelial-specific intercellular cell-adhesion molecule. In addition to cell adhesion,EpCAM is also involved in cellular signaling,cell migration,proliferation,and differentiation. EpCAM is highly expressed on most carcinomas and therefore of potential use as a diagnostic and prognostic marker for a variety of carcinomas,and has become a therapeutic target.

#### For Research Use Only

Thank you for your recent purchase.  
 If you would like to learn more about antibodies,please visit [www.elabscience.com](http://www.elabscience.com).

**Focus on your research  
 Service for life science**

Applications:WB-Western Blot IHC-Immunohistochemistry IF-Immunofluorescence IP-Immunoprecipitation FC-Flow cytometry ChIP-Chromatin Immunoprecipitation Reactivity: H-Human R-Rat M-Mouse Mk-Monkey Dg-Dog Ch-Chicken Hm-Hamster Rb-Rabbit Sh-Sheep Pg-Pig Z-Zebrafish X-Xenopus C-Cow.