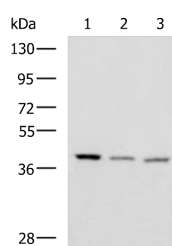


ENKD1 Polyclonal Antibody

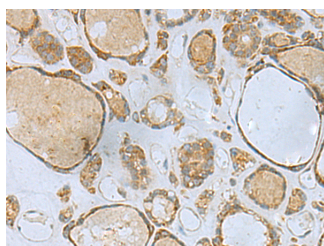
Catalog No.	E-AB-19244	Reactivity	H,M
Storage	Store at -20°C. Avoid freeze / thaw cycles.	Host	Rabbit
Applications	WB,IHC,ELISA	Isotype	IgG

Note: Centrifuge before opening to ensure complete recovery of vial contents.

Images



Western blot analysis of Human cerebrum tissue Human cerebella tissue Mouse brain tissue lysates using ENKD1 Polyclonal Antibody at dilution of 1:1150



Immunohistochemistry of paraffin-embedded Human thyroid cancer tissue using ENKD1 Polyclonal Antibody at dilution of 1:80(x200)

Immunogen Information

Immunogen	Fusion protein of human ENKD1
Gene Accession	BC008284
Swissprot	Q9H0I2
Synonyms	DKFZp434A1319, Enkd1, ENKD1, Hypothetical protein LOC84080, UNQ6410

Product Information

Calculated MW	39 kDa
Observed MW	Refer to figures
Buffer	PBS with 0.05% NaN3 and 40% Glycerol, pH7.4
Purify	Antigen affinity purification
Dilution	WB 1:500-1:2000, IHC 1:50-1:200, ELISA 1:5000-1:10000

Background

The exact function of ENKD1 remains unknown.

For Research Use Only

Thank you for your recent purchase.
 If you would like to learn more about antibodies, please visit www.elabscience.com.

**Focus on your research
 Service for life science**

Applications: WB-Western Blot IHC-Immunohistochemistry IF-Immunofluorescence IP-Immunoprecipitation FC-Flow cytometry ChIP-Chromatin Immunoprecipitation Reactivity: H-Human R-Rat M-Mouse Mk-Monkey Dg-Dog Ch-Chicken Hm-Hamster Rb-Rabbit Sh-Sheep Pg-Pig Z-Zebrafish X-Xenopus C-Cow.