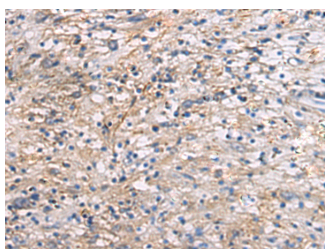


## CEP89 Polyclonal Antibody

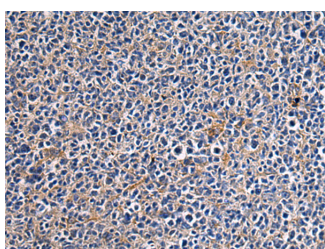
<b>Catalog No.</b>	E-AB-19251	<b>Reactivity</b>	H
<b>Storage</b>	Store at -20°C. Avoid freeze / thaw cycles.	<b>Host</b>	Rabbit
<b>Applications</b>	IHC,ELISA	<b>Isotype</b>	IgG

**Note:** Centrifuge before opening to ensure complete recovery of vial contents.

### Images



Immunohistochemistry of paraffin-embedded Human brain tissue using CEP89 Polyclonal Antibody at dilution of 1:95(×200)



Immunohistochemistry of paraffin-embedded Human tonsil tissue using CEP89 Polyclonal Antibody at dilution of 1:95(×200)

### Immunogen Information

<b>Immunogen</b>	Fusion protein of human CEP89
<b>Gene Accession</b>	BC032307
<b>Swissprot</b>	Q96ST8
<b>Synonyms</b>	cep89,CEP89,Coiled-coil domain-containing protein 123, mitochondrial,FLJ14640

### Product Information

<b>Buffer</b>	PBS with 0.05% NaN <sub>3</sub> and 40% Glycerol,pH7.4
<b>Purify</b>	Antigen affinity purification
<b>Dilution</b>	IHC 1:100-1:300, ELISA 1:5000-1:10000

### Background

Required for ciliogenesis. Also plays a role in mitochondrial metabolism where it may modulate complex IV activity.

#### For Research Use Only

Thank you for your recent purchase.

If you would like to learn more about antibodies, please visit [www.elabscience.com](http://www.elabscience.com).

**Focus on your research  
Service for life science**

Applications:WB-Western Blot IHC-Immunohistochemistry IF-Immunofluorescence IP-Immunoprecipitation FC-Flow cytometry ChIP-Chromatin Immunoprecipitation Reactivity: H-Human R-Rat M-Mouse Mk-Monkey Dg-Dog Ch-Chicken Hm-Hamster Rb-Rabbit Sh-Sheep Pg-Pig Z-Zebrafish X-Xenopus C-Cow.