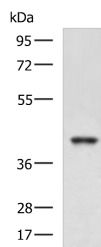


RBM4 Polyclonal Antibody

Catalog No.	E-AB-19255	Reactivity	H,M
Storage	Store at -20°C. Avoid freeze / thaw cycles.	Host	Rabbit
Applications	WB,ELISA	Isotype	IgG

Note: Centrifuge before opening to ensure complete recovery of vial contents.

Images



Western blot analysis of K562 and HepG2 cell lysates using RBM4 Polyclonal Antibody at dilution of 1:750

Immunogen Information

Immunogen	Fusion protein of human RBM4
Gene Accession	BC032735
Swissprot	Q9BWF3
Synonyms	hLark,lark,RBM4,rbm4 lark,RBM4,RNA binding motif 4,RNA-binding protein 4

Product Information

Calculated MW	40 kDa
Observed MW	Refer to figures
Buffer	PBS with 0.05% NaN ₃ and 40% Glycerol,pH7.4
Purify	Antigen affinity purification
Dilution	WB 1:500-1:2000, ELISA 1:5000-1:10000

Background

RBM4,RNA-binding motif protein4,contains 2 RRM-type RNA-binding motif and a retroviral-type(RT) zinc finger. RNA-binding factor participates in number of aspects of cellular processes such as alternative splicing of pre-mRNA and translation regulation. RBM4 recruits eIF4A1 to stimulate IRES-dependent translation in responds to cellular stress. Once assembled at the rHRE,the HIF2A-RBM4-eIF4E2 complex captures the 5-prime cap and targets mRNAs to polysomes for active translation,thereby evading hypoxia-induced repression of protein synthesis.

For Research Use Only

Thank you for your recent purchase.
 If you would like to learn more about antibodies,please visit www.elabscience.com.

**Focus on your research
 Service for life science**

Applications:WB-Western Blot IHC-Immunohistochemistry IF-Immunofluorescence IP-Immunoprecipitation FC-Flow cytometry ChIP-Chromatin Immunoprecipitation Reactivity: H-Human R-Rat M-Mouse Mk-Monkey Dg-Dog Ch-Chicken Hm-Hamster Rb-Rabbit Sh-Sheep Pg-Pig Z-Zebrafish X-Xenopus C-Cow.