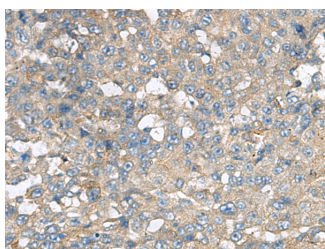


CXCR5 Polyclonal Antibody

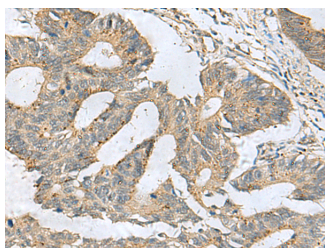
Catalog No.	E-AB-19280	Reactivity	H
Storage	Store at -20°C. Avoid freeze / thaw cycles.	Host	Rabbit
Applications	IHC,ELISA	Isotype	IgG

Note: Centrifuge before opening to ensure complete recovery of vial contents.

Images



Immunohistochemistry of paraffin-embedded Human liver cancer tissue using CXCR5 Polyclonal Antibody at dilution of 1:80(×200)



Immunohistochemistry of paraffin-embedded Human colorectal cancer tissue using CXCR5 Polyclonal Antibody at dilution of 1:80(×200)

Immunogen Information

Immunogen	Synthetic peptide of human CXCR5
Gene Accession	NP001707
Swissprot	P32302
Synonyms	BLR 1,BLR1,C-X-C chemokine receptor type 5,CD 185,CD185,CD185 antigen,CXC R5,CXC-R5,CXCR 5,CXCR-5,Cxcr5,CXCR5,MDR 15,MDR-15,MDR15

Product Information

Buffer	PBS with 0.05% NaN ₃ and 40% Glycerol,pH7.4
Purify	Antigen affinity purification
Dilution	IHC 1:50-1:200, ELISA 1:5000-1:10000

Background

This gene encodes a multi-pass membrane protein that belongs to the CXC chemokine receptor family. It is expressed in mature B-cells and Burkitt's lymphoma. This cytokine receptor binds to B-lymphocyte chemoattractant (BLC), and is involved in B-cell migration into B-cell follicles of spleen and Peyer patches. Alternatively spliced transcript variants encoding different isoforms have been described for this gene.

For Research Use Only

Thank you for your recent purchase.
 If you would like to learn more about antibodies, please visit www.elabscience.com.

**Focus on your research
 Service for life science**

Applications:WB-Western Blot IHC-Immunohistochemistry IF-Immunofluorescence IP-Immunoprecipitation FC-Flow cytometry ChIP-Chromatin Immunoprecipitation Reactivity: H-Human R-Rat M-Mouse Mk-Monkey Dg-Dog Ch-Chicken Hm-Hamster Rb-Rabbit Sh-Sheep Pg-Pig Z-Zebrafish X-Xenopus C-Cow.