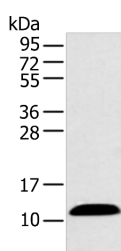


PPBP Polyclonal Antibody

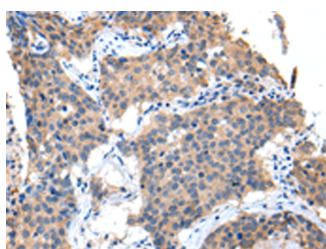
Catalog No.	E-AB-19288	Reactivity	H
Storage	Store at -20°C. Avoid freeze / thaw cycles.	Host	Rabbit
Applications	WB,IHC,ELISA	Isotype	IgG

Note: Centrifuge before opening to ensure complete recovery of vial contents.

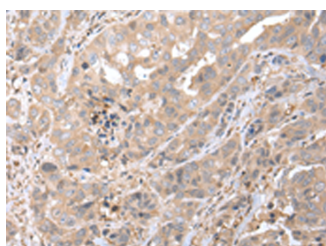
Images



Western blot analysis of Human plasma solution using PPBP Polyclonal Antibody at dilution of 1:500



Immunohistochemistry of paraffin-embedded Human lung cancer tissue using PPBP Polyclonal Antibody at dilution of 1:35(×200)



Immunohistochemistry of paraffin-embedded Human breast cancer tissue using PPBP Polyclonal Antibody at dilution of 1:35(×200)

Immunogen Information

Immunogen	Synthetic peptide of human PPBP
Gene Accession	NP002695
Swissprot	P02775
Synonyms	B TG1,CTAP3,CTAPIII,CXC chemokine ligand 7,CXCL 7,CXCL7,CXCL7,LA PF 4,LA-PF4

Product Information

Calculated MW	14 kDa
Observed MW	Refer to figures
Buffer	PBS with 0.05% NaN ₃ and 40% Glycerol,pH7.4
Purify	Antigen affinity purification
Dilution	WB 1:1000-1:5000, IHC 1:25-1:100, ELISA 1:2000-1:10000

Background

PPBP (Pro-Platelet Basic Protein) is a Protein Coding gene. Diseases associated with PPBP include Erythromelalgia and Colloid Adenoma. Among its related pathways are GPCR Pathway and Peptide ligand-binding receptors. GO annotations related to this gene include growth factor activity and glucose transmembrane transporter activity. An important paralog of this gene is CXCL1. The protein encoded by this gene is a platelet-derived growth factor that belongs to the CXC chemokine family. This growth factor is a potent chemoattractant and activator of neutrophils. It has been shown to stimulate various cellular processes including DNA synthesis, mitosis, glycolysis, intracellular cAMP accumulation, prostaglandin E2 secretion, and synthesis of hyaluronic acid and sulfated glycosaminoglycan. It also stimulates the formation and secretion of plasminogen activator by synovial cells. The protein also is an antimicrobial protein with bactericidal and antifungal activity.

For Research Use Only

Thank you for your recent purchase.
 If you would like to learn more about antibodies, please visit www.elabscience.com.

Focus on your research
Service for life science

Applications:WB-Western Blot IHC-Immunohistochemistry IF-Immunofluorescence IP-Immunoprecipitation FC-Flow cytometry ChIP-Chromatin Immunoprecipitation Reactivity: H-Human R-Rat M-Mouse Mk-Monkey Dg-Dog Ch-Chicken Hm-Hamster Rb-Rabbit Sh-Sheep Pg-Pig Z-Zebrafish X-Xenopus C-Cow.