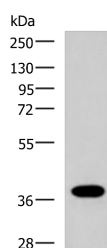


GPR6 Polyclonal Antibody

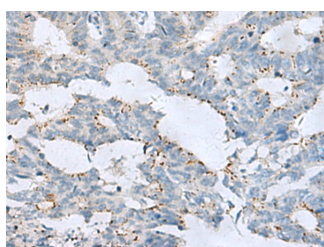
Catalog No.	E-AB-19291	Reactivity	H,M,R
Storage	Store at -20°C. Avoid freeze / thaw cycles.	Host	Rabbit
Applications	WB,IHC,ELISA	Isotype	IgG

Note: Centrifuge before opening to ensure complete recovery of vial contents.

Images



Western blot analysis of Human placenta tissue lysate using GPR6 Polyclonal Antibody at dilution of 1:1000



Immunohistochemistry of paraffin-embedded Human colorectal cancer tissue using GPR6 Polyclonal Antibody at dilution of 1:80(x200)

Immunogen Information

Immunogen	Synthetic peptide of human GPR6
Gene Accession	NP005275
Swissprot	P46095
Synonyms	GPR 6,GPR6,GPR6,Sphingosine 1 phosphate receptor GPR 6

Product Information

Calculated MW	38 kDa
Observed MW	Refer to figures
Buffer	PBS with 0.05% NaN ₃ and 40% Glycerol,pH7.4
Purify	Antigen affinity purification
Dilution	WB 1:1000-1:5000, IHC 1:50-1:100, ELISA 1:5000-1:10000

Background

G protein-coupled receptor 6, also known as GPR6, is a protein which in humans is encoded by the GPR6 gene. GPR6 is a member of the G protein-coupled receptor family of transmembrane receptors. It has been reported that GPR6 is both constitutively active but in addition is further activated by sphingosine-1-phosphate. GPR6 up-regulates cyclic AMP levels and promotes neurite outgrowth.

For Research Use Only

Thank you for your recent purchase.
 If you would like to learn more about antibodies, please visit www.elabscience.com.

**Focus on your research
 Service for life science**

Applications:WB-Western Blot IHC-Immunohistochemistry IF-Immunofluorescence IP-Immunoprecipitation FC-Flow cytometry ChIP-Chromatin Immunoprecipitation Reactivity: H-Human R-Rat M-Mouse Mk-Monkey Dg-Dog Ch-Chicken Hm-Hamster Rb-Rabbit Sh-Sheep Pg-Pig Z-Zebrafish X-Xenopus C-Cow.