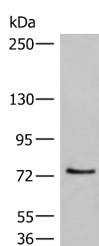


MCMBP Polyclonal Antibody

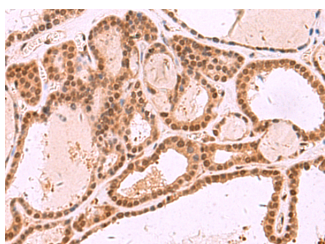
Catalog No.	E-AB-19295	Reactivity	H,R
Storage	Store at -20°C. Avoid freeze / thaw cycles.	Host	Rabbit
Applications	WB,IHC,ELISA	Isotype	IgG

Note: Centrifuge before opening to ensure complete recovery of vial contents.

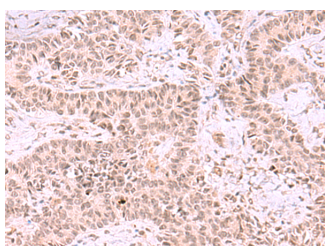
Images



Western blot analysis of 293T cell lysate using MCMBP Polyclonal Antibody at dilution of 1:800



Immunohistochemistry of paraffin-embedded Human thyroid cancer tissue using MCMBP Polyclonal Antibody at dilution of 1:35(x200)



Immunohistochemistry of paraffin-embedded Human ovarian cancer tissue using MCMBP Polyclonal Antibody at dilution of 1:35(x200)

Immunogen Information

Immunogen	Synthetic peptide of human MCMBP
Gene Accession	NP079110
Swissprot	Q9BTE3
Synonyms	MCM-binding protein, MCM-BP, mcmbp, MCMBP, Mini-chromosome maintenance complex-binding protein

Product Information

Calculated MW	73 kDa
Observed MW	Refer to figures
Buffer	PBS with 0.05% NaN ₃ and 40% Glycerol, pH 7.4
Purify	Antigen affinity purification
Dilution	WB 1:500-1:2000, IHC 1:30-1:150, ELISA 1:5000-1:10000

Background

This gene encodes a protein which is a component of the hexameric minichromosome maintenance (MCM) complex which regulates initiation and elongation of DNA. Multiple transcript variants encoding different isoforms have been found for this gene.

For Research Use Only

Thank you for your recent purchase.
 If you would like to learn more about antibodies, please visit www.elabscience.com.

**Focus on your research
 Service for life science**

Applications: WB-Western Blot IHC-Immunohistochemistry IF-Immunofluorescence IP-Immunoprecipitation FC-Flow cytometry ChIP-Chromatin Immunoprecipitation Reactivity: H-Human R-Rat M-Mouse Mk-Monkey Dg-Dog Ch-Chicken Hm-Hamster Rb-Rabbit Sh-Sheep Pg-Pig Z-Zebrafish X-Xenopus C-Cow.