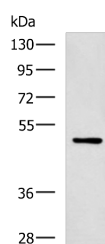


PAX2 Polyclonal Antibody

| | | | |
|---------------------|---|-------------------|--------|
| Catalog No. | E-AB-19302 | Reactivity | H,M |
| Storage | Store at -20°C. Avoid freeze / thaw cycles. | Host | Rabbit |
| Applications | WB,ELISA | Isotype | IgG |

Note: Centrifuge before opening to ensure complete recovery of vial contents.

Images



Western blot analysis of MCF-7 cell lysate using PAX2 Polyclonal Antibody at dilution of 1:400

Immunogen Information

| | |
|-----------------------|--|
| Immunogen | Synthetic peptide of human PAX2 |
| Gene Accession | NP000269 |
| Swissprot | Q02962 |
| Synonyms | FSGS7, Paired box 2, Paired box protein Pax 2, Paired box protein Pax-2, Paired box protein Pax2, PAPRS, Pax 2 |

Product Information

| | |
|----------------------|---|
| Calculated MW | 45 kDa |
| Observed MW | Refer to figures |
| Buffer | PBS with 0.05% NaN ₃ and 40% Glycerol, pH7.4 |
| Purify | Antigen affinity purification |
| Dilution | WB 1:500-1:2000, ELISA 1:5000-1:10000 |

Background

PAX2 encodes paired box gene 2, one of many human homologues of the *Drosophila melanogaster* gene *prd*. The central feature of this transcription factor gene family is the conserved DNA-binding paired box domain. PAX2 is believed to be a target of transcriptional suppression by the tumor suppressor gene *WT1*. Mutations within PAX2 have been shown to result in optic nerve colobomas and renal hypoplasia. Alternative splicing of this gene results in multiple transcript variants.

For Research Use Only

Thank you for your recent purchase.
 If you would like to learn more about antibodies, please visit www.elabscience.com.

**Focus on your research
 Service for life science**

Applications: WB-Western Blot IHC-Immunohistochemistry IF-Immunofluorescence IP-Immunoprecipitation FC-Flow cytometry ChIP-Chromatin Immunoprecipitation Reactivity: H-Human R-Rat M-Mouse Mk-Monkey Dg-Dog Ch-Chicken Hm-Hamster Rb-Rabbit Sh-Sheep Pg-Pig Z-Zebrafish X-Xenopus C-Cow.