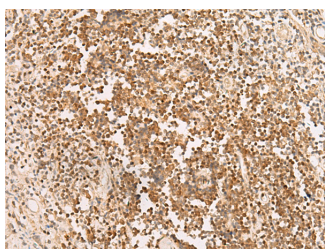


PAX5 Polyclonal Antibody

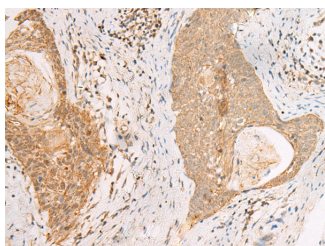
Catalog No.	E-AB-19303	Reactivity	H,M
Storage	Store at -20°C. Avoid freeze / thaw cycles.	Host	Rabbit
Applications	IHC,ELISA	Isotype	IgG

Note: Centrifuge before opening to ensure complete recovery of vial contents.

Images



Immunohistochemistry of paraffin-embedded Human prostate cancer tissue using PAX5 Polyclonal Antibody at dilution of 1:30 (x200)



Immunohistochemistry of paraffin-embedded Human esophagus cancer tissue using PAX5 Polyclonal Antibody at dilution of 1:30 (x200)

Immunogen Information

Immunogen	Synthetic peptide of human PAX5
Gene Accession	NP057953
Swissprot	Q02548
Synonyms	BSAP,EBB-1,KLP,Paired box 5,Paired box protein Pax 5,Paired box protein Pax-5,Paired domain gene 5,PAX 5,PAX5,PAX5

Product Information

Buffer	PBS with 0.05% NaN3 and 40% Glycerol,pH7.4
Purify	Antigen affinity purification
Dilution	IHC 1:30-1:150, ELISA 1:5000-1:10000

Background

PAX5, also named B-cell specific activator protein (BSAP), is a member of the highly conserved paired box (PAX)-domain family of transcription factors. PAX5 is essential in normal B-cell lymphopoiesis. It is expressed in pro-B, pre-B and mature B lymphocytes but not in plasma cells. PAX5 is a common target in leukemogenesis of B-ALL (B-lineage acute lymphoblastic leukemia) along with CDKN2A. Owing to its frequent deletion in B-ALL, PAX5 could be used as one of the molecular markers in diagnosis and monitoring of the disease. This antibody is specific to PAX5. It will not cross react with other PAX members.

For Research Use Only

Thank you for your recent purchase.
 If you would like to learn more about antibodies, please visit www.elabscience.com.

**Focus on your research
 Service for life science**

Applications: WB-Western Blot IHC-Immunohistochemistry IF-Immunofluorescence IP-Immunoprecipitation FC-Flow cytometry ChIP-Chromatin Immunoprecipitation Reactivity: H-Human R-Rat M-Mouse Mk-Monkey Dg-Dog Ch-Chicken Hm-Hamster Rb-Rabbit Sh-Sheep Pg-Pig Z-Zebrafish X-Xenopus C-Cow.