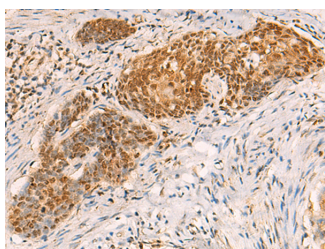


## SREBF2 Polyclonal Antibody

<b>Catalog No.</b>	E-AB-19304	<b>Reactivity</b>	H,M,R
<b>Storage</b>	Store at -20°C. Avoid freeze / thaw cycles.	<b>Host</b>	Rabbit
<b>Applications</b>	IHC,ELISA	<b>Isotype</b>	IgG

**Note:** Centrifuge before opening to ensure complete recovery of vial contents.

### Images



Immunohistochemistry of paraffin-embedded Human esophagus cancer tissue using SREBF2 Polyclonal Antibody at dilution of 1:50(×200)

### Immunogen Information

<b>Immunogen</b>	Synthetic peptide of human SREBF2
<b>Gene Accession</b>	NP004590
<b>Swissprot</b>	Q12772
<b>Synonyms</b>	SRBP2,SREBF 2,Srebf2,SREBF2 protein,SREBP 2,SREBP-2,SREBP2

### Product Information

<b>Buffer</b>	PBS with 0.05% NaN3 and 40% Glycerol,pH7.4
<b>Purify</b>	Antigen affinity purification
<b>Dilution</b>	IHC 1:50-1:300, ELISA 1:5000-1:10000

### Background

This gene encodes a member of the a ubiquitously expressed transcription factor that controls cholesterol homeostasis by regulating transcription of sterol-regulated genes. The encoded protein contains a basic helix-loop-helix-leucine zipper (bHLH-Zip) domain and binds the sterol regulatory element 1 motif. Alternate splicing results in multiple transcript variants.

#### For Research Use Only

Thank you for your recent purchase.

If you would like to learn more about antibodies, please visit [www.elabscience.com](http://www.elabscience.com).

**Focus on your research  
Service for life science**

Applications:WB-Western Blot IHC-Immunohistochemistry IF-Immunofluorescence IP-Immunoprecipitation FC-Flow cytometry ChIP-Chromatin Immunoprecipitation Reactivity: H-Human R-Rat M-Mouse Mk-Monkey Dg-Dog Ch-Chicken Hm-Hamster Rb-Rabbit Sh-Sheep Pg-Pig Z-Zebrafish X-Xenopus C-Cow.