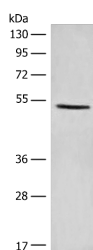


## PTEN Polyclonal Antibody

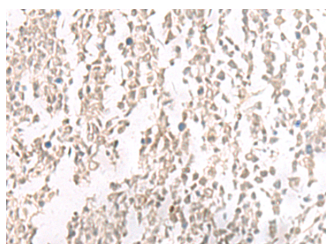
<b>Catalog No.</b>	E-AB-19312	<b>Reactivity</b>	H,M
<b>Storage</b>	Store at -20°C. Avoid freeze / thaw cycles.	<b>Host</b>	Rabbit
<b>Applications</b>	WB,IHC,ELISA	<b>Isotype</b>	IgG

**Note:** Centrifuge before opening to ensure complete recovery of vial contents.

### Images



Western blot analysis of NIH/3T3 cell lysate using PTEN Polyclonal Antibody at dilution of 1:1100



Immunohistochemistry of paraffin-embedded Human tonsil tissue using PTEN Polyclonal Antibody at dilution of 1:25(×200)

### Immunogen Information

<b>Immunogen</b>	Synthetic peptide of human PTEN
<b>Gene Accession</b>	NP000305
<b>Swissprot</b>	P60484
<b>Synonyms</b>	MHAM,MMAC1,Pten,PTEN,PTEN1,TEP1

### Product Information

<b>Calculated MW</b>	47 kDa
<b>Observed MW</b>	Refer to figures
<b>Buffer</b>	PBS with 0.05% NaN <sub>3</sub> and 40% Glycerol,pH7.4
<b>Purify</b>	Antigen affinity purification
<b>Dilution</b>	WB 1:500-1:2000, IHC 1:20-1:100, ELISA 1:5000-1:10000

### Background

PTEN (also designated MMAC1),products of tumor suppressor genes,are found deleted in most human gliomas. The PTEN genes are also mutated in many other tumors,such as brain,breast,kidney and prostate cancers. PTEN is a protein tyrosine phosphatase that may terminate the signaling transduction pathways mediated by PI 3-kinase/Akt. PTEN has an apparent molecular weight of 55 kDa and it is located in the cytosol.

#### For Research Use Only

Thank you for your recent purchase.  
If you would like to learn more about antibodies,please visit [www.elabscience.com](http://www.elabscience.com).

#### Focus on your research Service for life science

Applications:WB-Western Blot IHC-Immunohistochemistry IF-Immunofluorescence IP-Immunoprecipitation FC-Flow cytometry ChIP-Chromatin Immunoprecipitation Reactivity: H-Human R-Rat M-Mouse Mk-Monkey Dg-Dog Ch-Chicken Hm-Hamster Rb-Rabbit Sh-Sheep Pg-Pig Z-Zebrafish X-Xenopus C-Cow.