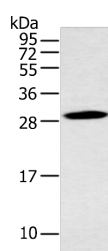


## YRDC Polyclonal Antibody

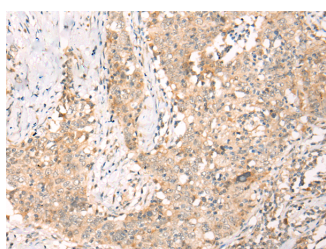
<b>Catalog No.</b>	E-AB-19369	<b>Reactivity</b>	H,M,R
<b>Storage</b>	Store at -20°C. Avoid freeze / thaw cycles.	<b>Host</b>	Rabbit
<b>Applications</b>	WB,IHC,ELISA	<b>Isotype</b>	IgG

**Note:** Centrifuge before opening to ensure complete recovery of vial contents.

### Images



Western blot analysis of Mouse stomach tissue using YRDC Polyclonal Antibody at dilution of 1:400



Immunohistochemistry of paraffin-embedded Human esophagus cancer tissue using YRDC Polyclonal Antibody at dilution of 1:30(×200)

### Immunogen Information

<b>Immunogen</b>	Synthetic peptide of human YRDC
<b>Gene Accession</b>	NP078916
<b>Swissprot</b>	Q86U90
<b>Synonyms</b>	Dopamine receptor-interacting protein 3, DRIP3, FLJ23476, FLJ26165, hIRIP, IRIP, YRDC

### Product Information

<b>Calculated MW</b>	29 kDa
<b>Observed MW</b>	Refer to figures
<b>Buffer</b>	PBS with 0.05% NaN <sub>3</sub> and 40% Glycerol, pH7.4
<b>Purify</b>	Antigen affinity purification
<b>Dilution</b>	WB 1:500-1:2000, IHC 1:25-1:100, ELISA 1:2000-1:5000

### Background

YrdC (yrdC domain containing protein), also known as IRIP (ischemia/reperfusion-inducible protein homolog), SUA5 or DRIP3 (dopamine receptor-interacting protein 3), is a 279 amino acid ubiquitously expressed protein found at highest levels in brain, liver and pancreas. A member of the SUA5 family, yrdC is involved in certain aspects of transporter activity, such as the regulation of efflux transporter activity and cargo assembly. YrdC is a peripheral membrane protein that contains one yrdC-like domain, interacts with RSC1A1 and localizes to mitochondrial and plasma membranes.

#### For Research Use Only

Thank you for your recent purchase.  
 If you would like to learn more about antibodies, please visit [www.elabscience.com](http://www.elabscience.com).

**Focus on your research  
 Service for life science**

Applications: WB-Western Blot IHC-Immunohistochemistry IF-Immunofluorescence IP-Immunoprecipitation FC-Flow cytometry ChIP-Chromatin Immunoprecipitation Reactivity: H-Human R-Rat M-Mouse Mk-Monkey Dg-Dog Ch-Chicken Hm-Hamster Rb-Rabbit Sh-Sheep Pg-Pig Z-Zebrafish X-Xenopus C-Cow.