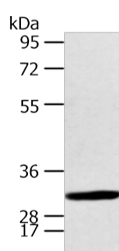


CALB2 Polyclonal Antibody

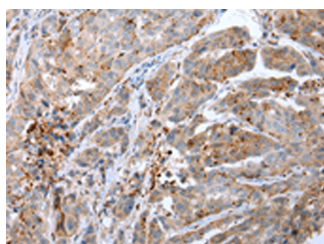
Catalog No.	E-AB-19373	Reactivity	H,M,R
Storage	Store at -20°C. Avoid freeze / thaw cycles.	Host	Rabbit
Applications	WB,IHC,ELISA	Isotype	IgG

Note: Centrifuge before opening to ensure complete recovery of vial contents.

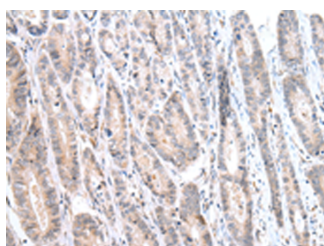
Images



Western blot analysis of Human fetal brain tissue using CALB2 Polyclonal Antibody at dilution of 1:400



Immunohistochemistry of paraffin-embedded Human breast cancer tissue using CALB2 Polyclonal Antibody at dilution of 1:25(x200)



Immunohistochemistry of paraffin-embedded Human gastric cancer tissue using CALB2 Polyclonal Antibody at dilution of 1:25(x200)

Immunogen Information

Immunogen	Synthetic peptide of human CALB2
Gene Accession	NP009019
Swissprot	P22676
Synonyms	29 kDa calbindin,CAB 29,CAB29,CAL 2,CAL2,CALB 2,CALB2,CALB2,Calbindin 2 29kDa,Calbindin 2,Calbindin D29K,Calbindin2,Calretinin,CR

Product Information

Calculated MW	32 kDa
Observed MW	Refer to figures
Buffer	PBS with 0.05% NaN ₃ and 40% Glycerol,pH7.4
Purify	Antigen affinity purification
Dilution	WB 1:500-1:2000, IHC 1:25-1:100, ELISA 1:2000-1:5000

Background

CALB2 (Calbindin 2) is a Protein Coding gene. Diseases associated with CALB2 include Adenofibroma and Adenomatoid Tumor. GO annotations related to this gene include calcium ion binding. An important paralog of this gene is CALB1. This gene encodes an intracellular calcium-binding protein belonging to the troponin C superfamily. Members of this protein family have six EF-hand domains which bind calcium. This protein plays a role in diverse cellular functions, including message targeting and intracellular calcium buffering. It also functions as a modulator of neuronal excitability, and is a diagnostic marker for some human diseases, including Hirschsprung disease and some cancers. Alternative splicing results in multiple transcript variants.

For Research Use Only

Thank you for your recent purchase.
 If you would like to learn more about antibodies, please visit www.elabscience.com.

Focus on your research
Service for life science

Applications:WB-Western Blot IHC-Immunohistochemistry IF-Immunofluorescence IP-Immunoprecipitation FC-Flow cytometry ChIP-Chromatin Immunoprecipitation Reactivity: H-Human R-Rat M-Mouse Mk-Monkey Dg-Dog Ch-Chicken Hm-Hamster Rb-Rabbit Sh-Sheep Pg-Pig Z-Zebrafish X-Xenopus C-Cow.