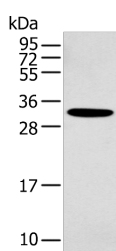


NANOS1 Polyclonal Antibody

Catalog No.	E-AB-19439	Reactivity	H,M
Storage	Store at -20°C. Avoid freeze / thaw cycles.	Host	Rabbit
Applications	WB,ELISA	Isotype	IgG

Note: Centrifuge before opening to ensure complete recovery of vial contents.

Images



Western blot analysis of Mouse muscle tissue using NANOS1 Polyclonal Antibody at dilution of 1:400

Immunogen Information

Immunogen	Synthetic peptide of human NANOS1
Gene Accession	NP955631
Swissprot	Q8WY41
Synonyms	EC Rep1a,EC_Rep1a,NANO1,NANOS 1,Nanos homolog 1 (Drosophila),Nanos homolog 1,NANOS1,Nos 1,NOS-1,Nos1,OTTHUMP00000046853,Rep 1a,Rep1a

Product Information

Calculated MW	30 kDa
Observed MW	Refer to figures
Buffer	PBS with 0.05% NaN3 and 40% Glycerol,pH7.4
Purify	Antigen affinity purification
Dilution	WB 1:500-1:2000, ELISA 1:5000-1:10000

Background

NANOS1 (Nanos C2HC-Type Zinc Finger 1) is a Protein Coding gene. Diseases associated with NANOS1 include Spermatogenic Failure 12. GO annotations related to this gene include RNA binding and translation repressor activity. An important paralog of this gene is NANOS3. This gene encodes a CCHC-type zinc finger protein that is a member of the nanos family. This protein co-localizes with the RNA-binding protein pumilio RNA-binding family member 2 and may be involved in regulating translation as a post-transcriptional repressor. Mutations in this gene are associated with spermatogenic impairment.

For Research Use Only

Thank you for your recent purchase.
 If you would like to learn more about antibodies, please visit www.elabscience.com.

**Focus on your research
 Service for life science**

Applications:WB-Western Blot IHC-Immunohistochemistry IF-Immunofluorescence IP-Immunoprecipitation FC-Flow cytometry ChIP-Chromatin Immunoprecipitation Reactivity: H-Human R-Rat M-Mouse Mk-Monkey Dg-Dog Ch-Chicken Hm-Hamster Rb-Rabbit Sh-Sheep Pg-Pig Z-Zebrafish X-Xenopus C-Cow.