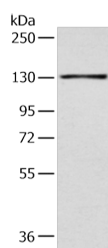


SMARCA1 Polyclonal Antibody

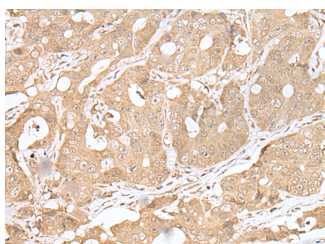
Catalog No.	E-AB-19442	Reactivity	H,M
Storage	Store at -20°C. Avoid freeze / thaw cycles.	Host	Rabbit
Applications	WB,IHC,ELISA	Isotype	IgG

Note: Centrifuge before opening to ensure complete recovery of vial contents.

Images



Western blot analysis of 293T cell using SMARCA1 Polyclonal Antibody at dilution of 1:450



Immunohistochemistry of paraffin-embedded Human gastric cancer tissue using SMARCA1 Polyclonal Antibody at dilution of 1:30(x200)

Immunogen Information

Immunogen	Synthetic peptide of human SMARCA1
Gene Accession	NP003060
Swissprot	P28370
Synonyms	ATP dependent helicase SMARCA1,SMARCA1,SNF2-like 1,SNF2L,SNF2L1,SNF2LB,SNF2LT,SWI2

Product Information

Calculated MW	123 kDa
Observed MW	Refer to figures
Buffer	PBS with 0.05% NaN ₃ and 40% Glycerol,pH7.4
Purify	Antigen affinity purification
Dilution	WB 1:500-1:2000, IHC 1:25-1:100, ELISA 1:5000-1:10000

Background

This gene encodes a member of the SWI/SNF family of proteins. The encoded protein is an ATPase which is expressed in diverse tissues and contributes to the chromatin remodeling complex that is involved in transcription. The protein may also play a role in DNA damage, growth inhibition and apoptosis of cancer cells. Alternative splicing results in multiple transcript variants.

For Research Use Only

Thank you for your recent purchase.
 If you would like to learn more about antibodies, please visit www.elabscience.com.

**Focus on your research
 Service for life science**

Applications:WB-Western Blot IHC-Immunohistochemistry IF-Immunofluorescence IP-Immunoprecipitation FC-Flow cytometry ChIP-Chromatin Immunoprecipitation Reactivity: H-Human R-Rat M-Mouse Mk-Monkey Dg-Dog Ch-Chicken Hm-Hamster Rb-Rabbit Sh-Sheep Pg-Pig Z-Zebrafish X-Xenopus C-Cow.