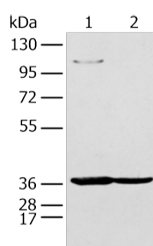


NUDT19 Polyclonal Antibody

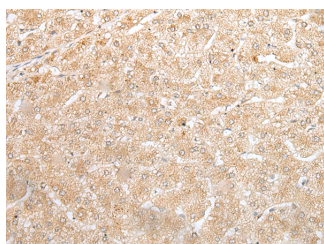
Catalog No.	E-AB-19451	Reactivity	H
Storage	Store at -20°C. Avoid freeze / thaw cycles.	Host	Rabbit
Applications	WB,IHC,ELISA	Isotype	IgG

Note: Centrifuge before opening to ensure complete recovery of vial contents.

Images



Western blot analysis of 293T and K562 cell using NUDT19 Polyclonal Antibody at dilution of 1:350



Immunohistochemistry of paraffin-embedded Human liver cancer tissue using NUDT19 Polyclonal Antibody at dilution of 1:25(×200)

Immunogen Information

Immunogen	Synthetic peptide of human NUDT19
Gene Accession	NP001099040
Swissprot	A8MXV4
Synonyms	Nucleoside diphosphate-linked moiety X motif 19,Nudix motif 19,NUDT19,RP2

Product Information

Calculated MW	42 kDa
Observed MW	Refer to figures
Buffer	PBS with 0.05% NaN ₃ and 40% Glycerol,pH7.4
Purify	Antigen affinity purification
Dilution	WB 1:500-1:2000, IHC 1:25-1:100, ELISA 1:5000-1:10000

Background

NUDT19 (nudix (nucleoside diphosphate linked moiety X)-type motif 19), also known as RP2, is a 375 amino acid protein and coenzyme A diphosphatase that assists in the hydrolysis of CoA esters. A member of the nudix hydrolase family, NUDT19 contains one nudix hydrolase domain and localizes to both mitochondria and peroxisome. NUDT19 utilizes magnesium and/or manganese as cofactors and is encoded by a gene that maps to human chromosome 19q13.11. Chromosome 19 consists of over 63 million bases, houses approximately 1,400 genes and is recognized for having the greatest gene density of the human chromosomes.

For Research Use Only

Thank you for your recent purchase.
 If you would like to learn more about antibodies, please visit www.elabscience.com.

**Focus on your research
 Service for life science**

Applications:WB-Western Blot IHC-Immunohistochemistry IF-Immunofluorescence IP-Immunoprecipitation FC-Flow cytometry ChIP-Chromatin Immunoprecipitation Reactivity: H-Human R-Rat M-Mouse Mk-Monkey Dg-Dog Ch-Chicken Hm-Hamster Rb-Rabbit Sh-Sheep Pg-Pig Z-Zebrafish X-Xenopus C-Cow.