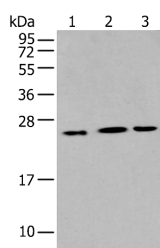


## IL6 Polyclonal Antibody

<b>Catalog No.</b>	E-AB-19453	<b>Reactivity</b>	H
<b>Storage</b>	Store at -20°C. Avoid freeze / thaw cycles.	<b>Host</b>	Rabbit
<b>Applications</b>	WB,ELISA	<b>Isotype</b>	IgG

**Note:** Centrifuge before opening to ensure complete recovery of vial contents.

### Images



Western blot analysis of Hepg2 Hela and A549 cell using IL6 Polyclonal Antibody at dilution of 1:400

### Immunogen Information

<b>Immunogen</b>	Synthetic peptide of human IL6
<b>Gene Accession</b>	NP000591
<b>Swissprot</b>	P05231
<b>Synonyms</b>	BSF 2,BSF-2,BSF2,CDF,IFN-beta-2,IFNB2,IL 6,IL-6,IL6,IL6,Interferon beta 2,Interferon beta-2,Interleukin 6,Interleukin-6

### Product Information

<b>Calculated MW</b>	24 kDa
<b>Observed MW</b>	Refer to figures
<b>Buffer</b>	PBS with 0.05% NaN3 and 40% Glycerol,pH7.4
<b>Purify</b>	Antigen affinity purification
<b>Dilution</b>	WB 1:500-1:2000, ELISA 1:5000-1:10000

### Background

Interleukin-6 (IL-6) is an interleukin that acts as both a pro-inflammatory and anti-inflammatory cytokine. IL-6 protein is secreted by a variety of cell types including T cells and macrophages as phosphorylated and variably glycosylated molecule. IL-6 Plays an essential role in the final differentiation of B-cells into Ig-secreting cells involved in lymphocyte and monocyte differentiation. It induces myeloma and plasmacytoma growth and induces nerve cells differentiation Acts on B-cells,T-cells,hepatocytes,hematopoietic progenitor cells and cells of the CNS. IL-6 is also considered a myokine,a cytokine produced from muscle,and is elevated in response to muscle contraction. IL-6 has been shown to interact with interleukin-6 receptor and glycoprotein 130. Additionally,IL-6 is involved in hematopoiesis,bone metabolism,and cancer progression,and has been defined an essential role in directing transition from innate to acquired immunity.

#### For Research Use Only

Thank you for your recent purchase.  
 If you would like to learn more about antibodies,please visit [www.elabscience.com](http://www.elabscience.com).

**Focus on your research  
 Service for life science**

Applications:WB-Western Blot IHC-Immunohistochemistry IF-Immunofluorescence IP-Immunoprecipitation FC-Flow cytometry ChIP-Chromatin Immunoprecipitation Reactivity: H-Human R-Rat M-Mouse Mk-Monkey Dg-Dog Ch-Chicken Hm-Hamster Rb-Rabbit Sh-Sheep Pg-Pig Z-Zebrafish X-Xenopus C-Cow.