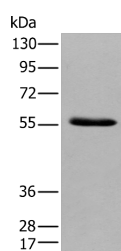


## GPC4 Polyclonal Antibody

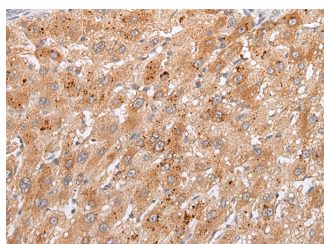
|                     |   |                   |        |
|---------------------|---|-------------------|--------|
| <b>Catalog No.</b>  | E-AB-19454                                  | <b>Reactivity</b> | H,M    |
| <b>Storage</b>      | Store at -20°C. Avoid freeze / thaw cycles. | <b>Host</b>       | Rabbit |
| <b>Applications</b> | WB,IHC,ELISA                                | <b>Isotype</b>    | IgG    |

**Note:** Centrifuge before opening to ensure complete recovery of vial contents.

### Images



Western blot analysis of Human pancreas tissue using GPC4 Polyclonal Antibody at dilution of 1:500



Immunohistochemistry of paraffin-embedded Human liver cancer tissue using GPC4 Polyclonal Antibody at dilution of 1:30(x200)

### Immunogen Information

|                       |  |
|-----------------------|--|
| <b>Immunogen</b>      | Synthetic peptide of human GPC4  |
| <b>Gene Accession</b> | NP001439   |
| <b>Swissprot</b>      | O75487   |
| <b>Synonyms</b>       | Glypican proteoglycan 4, Gpc4, GPC4, K Glypican, K-glypican, Kglypican |

### Product Information

|                      |   |
|----------------------|---|
| <b>Calculated MW</b> | 62 kDa  |
| <b>Observed MW</b>   | Refer to figures  |
| <b>Buffer</b>        | PBS with 0.05% NaN <sub>3</sub> and 40% Glycerol, pH7.4 |
| <b>Purify</b>        | Antigen affinity purification                           |
| <b>Dilution</b>      | WB 1:500-1:2000, IHC 1:25-1:100, ELISA 1:5000-1:10000   |

### Background

Cell surface heparan sulfate proteoglycans are composed of a membrane-associated protein core substituted with a variable number of heparan sulfate chains. Members of the glypican-related integral membrane proteoglycan family (GRIPS) contain a core protein anchored to the cytoplasmic membrane via a glycosyl phosphatidylinositol linkage. These proteins may play a role in the control of cell division and growth regulation. The GPC4 gene is adjacent to the 3' end of GPC3 and may also play a role in Simpson-Golabi-Behmel syndrome.

#### For Research Use Only

Thank you for your recent purchase.  
 If you would like to learn more about antibodies, please visit [www.elabscience.com](http://www.elabscience.com).

**Focus on your research  
 Service for life science**

Applications: WB-Western Blot IHC-Immunohistochemistry IF-Immunofluorescence IP-Immunoprecipitation FC-Flow cytometry ChIP-Chromatin Immunoprecipitation Reactivity: H-Human R-Rat M-Mouse Mk-Monkey Dg-Dog Ch-Chicken Hm-Hamster Rb-Rabbit Sh-Sheep Pg-Pig Z-Zebrafish X-Xenopus C-Cow.