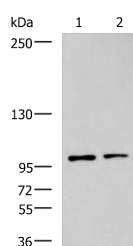


GLI1 Polyclonal Antibody

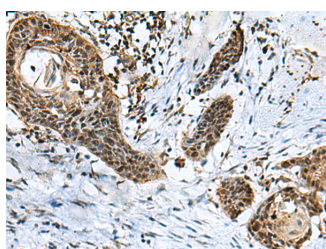
Catalog No.	E-AB-19459	Reactivity	H,M
Storage	Store at -20°C. Avoid freeze / thaw cycles.	Host	Rabbit
Applications	WB,IHC,ELISA	Isotype	IgG

Note: Centrifuge before opening to ensure complete recovery of vial contents.

Images



Western blot analysis of Raji and HepG2 cell lysates using GLI1 Polyclonal Antibody at dilution of 1:900



Immunohistochemistry of paraffin-embedded Human esophagus cancer tissue using GLI1 Polyclonal Antibody at dilution of 1:40(×200)

Immunogen Information

Immunogen	Synthetic peptide of human GLI1
Gene Accession	NP005260
Swissprot	P08151
Synonyms	Gli 1, GLI, GLI family zinc finger 1, Zfp 5, Zfp5, Zinc finger protein GLI 1, Zinc finger protein GLI1

Product Information

Calculated MW	118 kDa
Observed MW	Refer to figures
Buffer	PBS with 0.05% NaN ₃ and 40% Glycerol, pH7.4
Purify	Antigen affinity purification
Dilution	WB 1:500-1:2000, IHC 1:50-1:100, ELISA 1:5000-1:10000

Background

GLI1 (GLI Family Zinc Finger 1) is a Protein Coding gene. Diseases associated with GLI1 include Basal Cell Carcinoma and Necrobiosis Lipoidica. Among its related pathways are Wnt Signaling Pathways: beta-Catenin-independent Wnt/Ca²⁺ Signaling and Other Non-canonical Wnt Signaling Pathways and G-Beta Gamma Signaling. GO annotations related to this gene include chromatin binding and microtubule binding. An important paralog of this gene is GLI2. This gene encodes a member of the Kruppel family of zinc finger proteins. The encoded transcription factor is activated by the sonic hedgehog signal transduction cascade and regulates stem cell proliferation. The activity and nuclear localization of this protein is negatively regulated by p53 in an inhibitory loop. Multiple transcript variants encoding different isoforms have been found for this gene.

For Research Use Only

Thank you for your recent purchase.
 If you would like to learn more about antibodies, please visit www.elabscience.com.

**Focus on your research
 Service for life science**

Applications: WB-Western Blot IHC-Immunohistochemistry IF-Immunofluorescence IP-Immunoprecipitation FC-Flow cytometry ChIP-Chromatin Immunoprecipitation Reactivity: H-Human R-Rat M-Mouse Mk-Monkey Dg-Dog Ch-Chicken Hm-Hamster Rb-Rabbit Sh-Sheep Pg-Pig Z-Zebrafish X-Xenopus C-Cow.