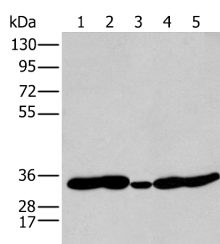


## HOXC11 Polyclonal Antibody

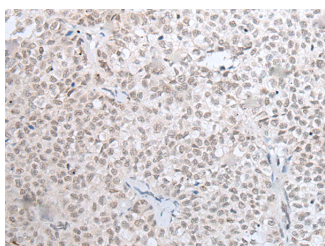
<b>Catalog No.</b>	E-AB-19468	<b>Reactivity</b>	H,M
<b>Storage</b>	Store at -20°C. Avoid freeze / thaw cycles.	<b>Host</b>	Rabbit
<b>Applications</b>	WB,IHC,ELISA	<b>Isotype</b>	IgG

**Note:** Centrifuge before opening to ensure complete recovery of vial contents.

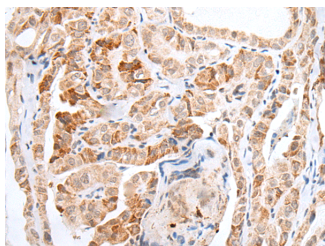
### Images



Western blot analysis of 231 Mouse heart tissue Human fetal brain tissue Jurkat and Hepg2 cell using HOXC11 Polyclonal Antibody at dilution of 1:250



Immunohistochemistry of paraffin-embedded Human ovarian cancer tissue using HOXC11 Polyclonal Antibody at dilution of 1:25(×200)



Immunohistochemistry of paraffin-embedded Human thyroid cancer tissue using HOXC11 Polyclonal Antibody at dilution of 1:25(×200)

### Immunogen Information

<b>Immunogen</b>	Synthetic peptide of human HOXC11
<b>Gene Accession</b>	NP055027
<b>Swissprot</b>	O43248
<b>Synonyms</b>	Homeo box C11,Homeobox C11,Homeobox protein Hox C11,Homeobox protein Hox-3H,Homeobox protein Hox-C11,HOX3H,HOXC11,HXC11,MGC4906

### Product Information

<b>Calculated MW</b>	34 kDa
<b>Observed MW</b>	Refer to figures
<b>Buffer</b>	PBS with 0.05% NaN <sub>3</sub> and 40% Glycerol,pH7.4
<b>Purify</b>	Antigen affinity purification
<b>Dilution</b>	WB 1:500-1:2000, IHC 1:20-1:100, ELISA 1:5000-1:10000

### Background

This gene is one of several homeobox HOXC genes located in a cluster on chromosome 12. The product of this gene binds to a promoter element of the lactase-phlorizin hydrolase. It also may play a role in early intestinal development. An alternatively spliced variant encoding a shorter isoform has been described but its full-length nature has not been determined.

#### For Research Use Only

Thank you for your recent purchase.  
 If you would like to learn more about antibodies, please visit [www.elabscience.com](http://www.elabscience.com).

**Focus on your research  
 Service for life science**

Applications:WB-Western Blot IHC-Immunohistochemistry IF-Immunofluorescence IP-Immunoprecipitation FC-Flow cytometry ChIP-Chromatin Immunoprecipitation Reactivity: H-Human R-Rat M-Mouse Mk-Monkey Dg-Dog Ch-Chicken Hm-Hamster Rb-Rabbit Sh-Sheep Pg-Pig Z-Zebrafish X-Xenopus C-Cow.