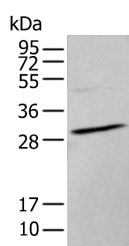


HOXC9 Polyclonal Antibody

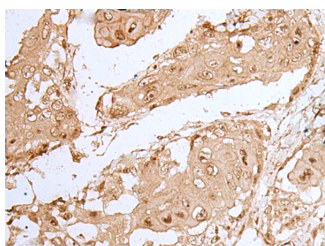
| | | | |
|---------------------|---|-------------------|--------|
| Catalog No. | E-AB-19499 | Reactivity | H,M |
| Storage | Store at -20°C. Avoid freeze / thaw cycles. | Host | Rabbit |
| Applications | WB,IHC,ELISA | Isotype | IgG |

Note: Centrifuge before opening to ensure complete recovery of vial contents.

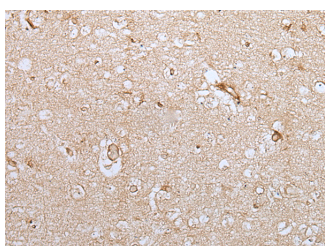
Images



Western blot analysis of TM4 cell lysate using HOXC9 Polyclonal Antibody at dilution of 1:350



Immunohistochemistry of paraffin-embedded Human esophagus cancer tissue using HOXC9 Polyclonal Antibody at dilution of 1:35(x200)



Immunohistochemistry of paraffin-embedded Human brain tissue using HOXC9 Polyclonal Antibody at dilution of 1:35(x200)

Immunogen Information

| | |
|-----------------------|--|
| Immunogen | Synthetic peptide of human HOXC9 |
| Gene Accession | NP008828 |
| Swissprot | P31274 |
| Synonyms | Homeo box C9,Homeobox C9,Homeobox protein Hox C9 ,Homeobox protein Hox-3B,Homeobox protein Hox-C9,Hox 3B,HOX3,HOX3B,Hoxc9,HXC9 |

Product Information

| | |
|----------------------|--|
| Calculated MW | 29 kDa |
| Observed MW | Refer to figures |
| Buffer | PBS with 0.05% NaN ₃ and 40% Glycerol,pH7.4 |
| Purify | Antigen affinity purification |
| Dilution | WB 1:500-1:2000, IHC 1:25-1:100, ELISA 1:5000-1:10000 |

Background

This gene belongs to the homeobox family of genes. The homeobox genes encode a highly conserved family of transcription factors that play an important role in morphogenesis in all multicellular organisms. Mammals possess four similar homeobox gene clusters, HOXA, HOXB, HOXC and HOXD, which are located on different chromosomes and consist of 9 to 11 genes arranged in tandem. This gene is one of several homeobox HOXC genes located in a cluster on chromosome 12.

For Research Use Only

Thank you for your recent purchase.
 If you would like to learn more about antibodies, please visit www.elabscience.com.

**Focus on your research
 Service for life science**

Applications:WB-Western Blot IHC-Immunohistochemistry IF-Immunofluorescence IP-Immunoprecipitation FC-Flow cytometry ChIP-Chromatin Immunoprecipitation Reactivity: H-Human R-Rat M-Mouse Mk-Monkey Dg-Dog Ch-Chicken Hm-Hamster Rb-Rabbit Sh-Sheep Pg-Pig Z-Zebrafish X-Xenopus C-Cow.