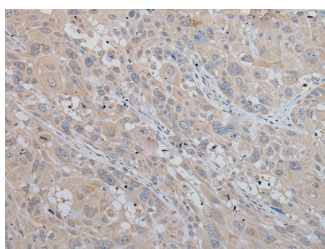


MLANA Polyclonal Antibody

Catalog No.	E-AB-19522	Reactivity	H
Storage	Store at -20°C. Avoid freeze / thaw cycles.	Host	Rabbit
Applications	IHC,ELISA	Isotype	IgG

Note: Centrifuge before opening to ensure complete recovery of vial contents.

Images



Immunohistochemistry of paraffin-embedded Human esophagus cancer tissue using MLANA Polyclonal Antibody at dilution of 1:50(×200)

Immunogen Information

Immunogen	Synthetic peptide of human MLANA
Gene Accession	NP005502
Swissprot	Q16655
Synonyms	Antigen SK29-AA,MAR1,MART 1,MART-1,MART1,Melan A,MLAN A,MLANA,Protein Melan-A

Product Information

Buffer	PBS with 0.05% NaN3 and 40% Glycerol,pH7.4
Purify	Antigen affinity purification
Dilution	IHC 1:40-1:250, ELISA 1:5000-1:10000

Background

Melan-A is a melanocyte differentiation antigen, recognized by autologous cytotoxic T lymphocytes. Melan-A is also called MART-1 (melanoma antigen recognized by T cells). The Melan-A/MART-1 gene encodes this protein, 20-22 kDa, associated with endoplasmic reticulum and melanosomes. The function of the protein is unknown. Melan-A, isolated as a melanoma-specific antigen, is a transmembrane protein, which is expressed in skin, retina and the majority of cultured melanocytes as well as in melanomas. Melan A is expressed in more than 85% of melanomas.

For Research Use Only

Thank you for your recent purchase.
 If you would like to learn more about antibodies, please visit www.elabscience.com.

**Focus on your research
 Service for life science**

Applications: WB-Western Blot IHC-Immunohistochemistry IF-Immunofluorescence IP-Immunoprecipitation FC-Flow cytometry ChIP-Chromatin Immunoprecipitation Reactivity: H-Human R-Rat M-Mouse Mk-Monkey Dg-Dog Ch-Chicken Hm-Hamster Rb-Rabbit Sh-Sheep Pg-Pig Z-Zebrafish X-Xenopus C-Cow.