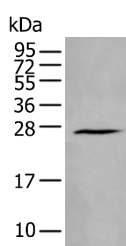


HAND1 Polyclonal Antibody

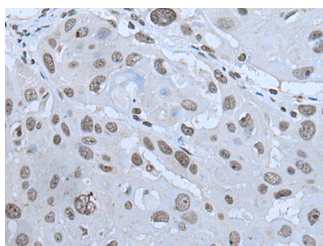
Catalog No.	E-AB-19541	Reactivity	H,M,R
Storage	Store at -20°C. Avoid freeze / thaw cycles.	Host	Rabbit
Applications	WB,IHC,ELISA	Isotype	IgG

Note: Centrifuge before opening to ensure complete recovery of vial contents.

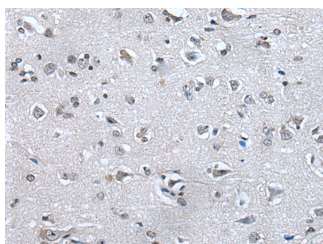
Images



Western blot analysis of Human fetal brain tissue lysate using HAND1 Polyclonal Antibody at dilution of 1:400



Immunohistochemistry of paraffin-embedded Human esophagus cancer tissue using HAND1 Polyclonal Antibody at dilution of 1:30(x200)



Immunohistochemistry of paraffin-embedded Human brain tissue using HAND1 Polyclonal Antibody at dilution of 1:30(x200)

Immunogen Information

Immunogen	Synthetic peptide of human HAND1
Gene Accession	NP004812
Swissprot	O96004
Synonyms	bHLHa27,Class A basic helix-loop-helix protein 27,HAND1,Hxt,Thing 1,Thing1 ,Thing1

Product Information

Calculated MW	24 kDa
Observed MW	Refer to figures
Buffer	PBS with 0.05% NaN ₃ and 40% Glycerol,pH7.4
Purify	Antigen affinity purification
Dilution	WB 1:500-1:2000, IHC 1:20-1:100, ELISA 1:5000-1:10000

Background

The protein encoded by this gene belongs to the basic helix-loop-helix family of transcription factors. This gene product is one of two closely related family members, the HAND proteins, which are asymmetrically expressed in the developing ventricular chambers and play an essential role in cardiac morphogenesis. Working in a complementary fashion, they function in the formation of the right ventricle and aortic arch arteries, implicating them as mediators of congenital heart disease. In addition, it has been suggested that this transcription factor may be required for early trophoblast differentiation.

For Research Use Only

Thank you for your recent purchase.
 If you would like to learn more about antibodies, please visit www.elabscience.com.

**Focus on your research
 Service for life science**

Applications:WB-Western Blot IHC-Immunohistochemistry IF-Immunofluorescence IP-Immunoprecipitation FC-Flow cytometry ChIP-Chromatin Immunoprecipitation Reactivity: H-Human R-Rat M-Mouse Mk-Monkey Dg-Dog Ch-Chicken Hm-Hamster Rb-Rabbit Sh-Sheep Pg-Pig Z-Zebrafish X-Xenopus C-Cow.