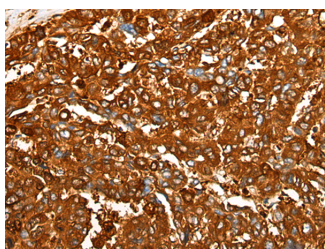


## PEAR1 Polyclonal Antibody

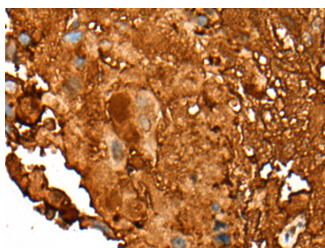
<b>Catalog No.</b>	E-AB-19565	<b>Reactivity</b>	H,M
<b>Storage</b>	Store at -20°C. Avoid freeze / thaw cycles.	<b>Host</b>	Rabbit
<b>Applications</b>	IHC,ELISA	<b>Isotype</b>	IgG

**Note:** Centrifuge before opening to ensure complete recovery of vial contents.

### Images



Immunohistochemistry of paraffin-embedded Human liver cancer tissue using PEAR1 Polyclonal Antibody at dilution of 1:25(×200)



Immunohistochemistry of paraffin-embedded Human breast cancer tissue using PEAR1 Polyclonal Antibody at dilution of 1:25(×200)

### Immunogen Information

<b>Immunogen</b>	Synthetic peptide of human PEAR1
<b>Gene Accession</b>	NP001073940
<b>Swissprot</b>	Q5VY43
<b>Synonyms</b>	hPEAR1,JEDI,MEGF12,Pear1,PEAR1,Platelet endothelial aggregation receptor 1

### Product Information

<b>Buffer</b>	PBS with 0.05% NaN <sub>3</sub> and 40% Glycerol,pH7.4
<b>Purify</b>	Antigen affinity purification
<b>Dilution</b>	IHC 1:30-1:150, ELISA 1:5000-1:10000

### Background

PEAR1 is a platelet receptor that signals upon the formation of platelet-platelet contacts independent of platelet activation and secondary to platelet aggregation (Nanda et al., 2005 [PubMed 15851471]).

#### For Research Use Only

Thank you for your recent purchase.

If you would like to learn more about antibodies, please visit [www.elabscience.com](http://www.elabscience.com).

**Focus on your research  
Service for life science**

Applications:WB-Western Blot IHC-Immunohistochemistry IF-Immunofluorescence IP-Immunoprecipitation FC-Flow cytometry ChIP-Chromatin Immunoprecipitation Reactivity: H-Human R-Rat M-Mouse Mk-Monkey Dg-Dog Ch-Chicken Hm-Hamster Rb-Rabbit Sh-Sheep Pg-Pig Z-Zebrafish X-Xenopus C-Cow.