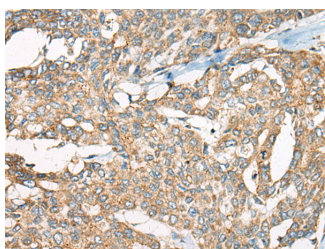


## YEATS2 Polyclonal Antibody

<b>Catalog No.</b>	E-AB-19569	<b>Reactivity</b>	H,M
<b>Storage</b>	Store at -20°C. Avoid freeze / thaw cycles.	<b>Host</b>	Rabbit
<b>Applications</b>	IHC,ELISA	<b>Isotype</b>	IgG

**Note:** Centrifuge before opening to ensure complete recovery of vial contents.

### Images



Immunohistochemistry of paraffin-embedded Human liver cancer tissue using YEATS2 Polyclonal Antibody at dilution of 1:55(×200)

### Immunogen Information

<b>Immunogen</b>	Synthetic peptide of human YEATS2
<b>Gene Accession</b>	NP060493
<b>Swissprot</b>	Q9ULM3
<b>Synonyms</b>	FLJ10201,FLJ12841,FLJ13308,FLJ33401,FLJ34335, KIAA1197,YEATS domain containing 2,YEATS domain-containing protein 2,Yeats2,YETS2

### Product Information

<b>Buffer</b>	PBS with 0.05% NaN3 and 40% Glycerol,pH7.4
<b>Purify</b>	Antigen affinity purification
<b>Dilution</b>	IHC 1:40-1:200, ELISA 1:5000-1:10000

### Background

The protein encoded by this gene is a scaffolding subunit of the ATAC complex, which is a complex with acetyltransferase activity on histones H3 and H4. Alternative splicing results in multiple transcript variants encoding different isoforms.YEATS2 (YEATS Domain Containing 2) is a Protein Coding gene. Among its related pathways are Chromatin organization. GO annotations related to this gene include TBP-class protein binding. An important paralog of this gene is YEATS4.

#### For Research Use Only

Thank you for your recent purchase.  
 If you would like to learn more about antibodies,please visit [www.elabscience.com](http://www.elabscience.com).

**Focus on your research  
 Service for life science**

Applications:WB-Western Blot IHC-Immunohistochemistry IF-Immunofluorescence IP-Immunoprecipitation FC-Flow cytometry ChIP-Chromatin Immunoprecipitation Reactivity: H-Human R-Rat M-Mouse Mk-Monkey Dg-Dog Ch-Chicken Hm-Hamster Rb-Rabbit Sh-Sheep Pg-Pig Z-Zebrafish X-Xenopus C-Cow.