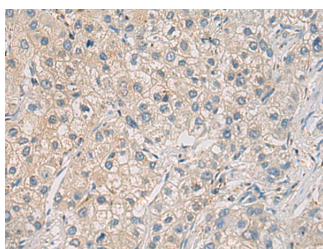


## WFDC3 Polyclonal Antibody

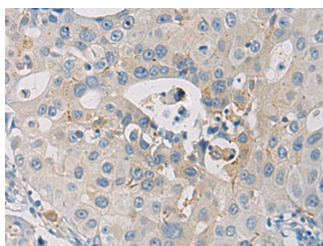
|                     |   |                   |        |
|---------------------|---|-------------------|--------|
| <b>Catalog No.</b>  | E-AB-19581                                  | <b>Reactivity</b> | H      |
| <b>Storage</b>      | Store at -20°C. Avoid freeze / thaw cycles. | <b>Host</b>       | Rabbit |
| <b>Applications</b> | IHC,ELISA                                   | <b>Isotype</b>    | IgG    |

**Note:** Centrifuge before opening to ensure complete recovery of vial contents.

### Images



Immunohistochemistry of paraffin-embedded Human liver cancer tissue using WFDC3 Polyclonal Antibody at dilution of 1:40(×200)



Immunohistochemistry of paraffin-embedded Human breast cancer tissue using WFDC3 Polyclonal Antibody at dilution of 1:40(×200)

### Immunogen Information

|                       |  |
|-----------------------|--|
| <b>Immunogen</b>      | Synthetic peptide of human WFDC3   |
| <b>Gene Accession</b> | NP542181   |
| <b>Swissprot</b>      | Q8IUB2   |
| <b>Synonyms</b>       | Putative protease inhibitor WAP14,WAP four-disulfide core domain protein 3,WAP14,WFDC3,WFDC3 |

### Product Information

|                 |  |
|-----------------|--|
| <b>Buffer</b>   | PBS with 0.05% NaN <sub>3</sub> and 40% Glycerol,pH7.4 |
| <b>Purify</b>   | Antigen affinity purification                          |
| <b>Dilution</b> | IHC 1:50-1:100, ELISA 1:5000-1:10000                   |

### Background

This gene encodes a member of the WAP-type four-disulfide core (WFDC) domain family. The WFDC domain, or WAP signature motif, contains eight cysteines forming four disulfide bonds at the core of the protein, and functions as a protease inhibitor. The encoded protein contains four WFDC domains. Most WFDC genes are localized to chromosome 20q12-q13 in two clusters: centromeric and telomeric. This gene belongs to the telomeric cluster. Alternatively spliced transcript variants have been observed but their full-length nature has not been determined.

#### For Research Use Only

Thank you for your recent purchase.  
 If you would like to learn more about antibodies, please visit [www.elabscience.com](http://www.elabscience.com).

**Focus on your research  
 Service for life science**

Applications:WB-Western Blot IHC-Immunohistochemistry IF-Immunofluorescence IP-Immunoprecipitation FC-Flow cytometry ChIP-Chromatin Immunoprecipitation Reactivity: H-Human R-Rat M-Mouse Mk-Monkey Dg-Dog Ch-Chicken Hm-Hamster Rb-Rabbit Sh-Sheep Pg-Pig Z-Zebrafish X-Xenopus C-Cow.