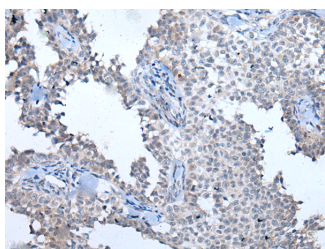


ATM Polyclonal Antibody

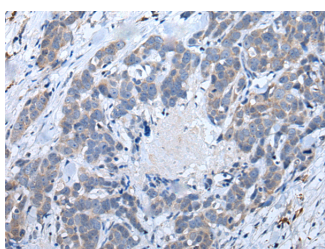
| | | | |
|---------------------|---|-------------------|--------|
| Catalog No. | E-AB-19625 | Reactivity | H |
| Storage | Store at -20°C. Avoid freeze / thaw cycles. | Host | Rabbit |
| Applications | IHC,ELISA | Isotype | IgG |

Note: Centrifuge before opening to ensure complete recovery of vial contents.

Images



Immunohistochemistry of paraffin-embedded Human ovarian cancer tissue using ATM Polyclonal Antibody at dilution of 1:65(×200)



Immunohistochemistry of paraffin-embedded Human thyroid cancer tissue using ATM Polyclonal Antibody at dilution of 1:65(×200)

Immunogen Information

| | |
|-----------------------|--|
| Immunogen | Synthetic peptide of human ATM |
| Gene Accession | NP000042 |
| Swissprot | Q13315 |
| Synonyms | AT1,ATA,ATC,ATD,ATDC,ATE,ATM,ATM,DKFZ p781A0353,MGC74674,Tefu,TEL1,TEL1,homolog,T ELO1 |

Product Information

| | |
|-----------------|--|
| Buffer | PBS with 0.05% NaN ₃ and 40% Glycerol,pH7.4 |
| Purify | Antigen affinity purification |
| Dilution | IHC 1:40-1:200, ELISA 1:5000-1:10000 |

Background

The protein encoded by this gene belongs to the PI3/PI4-kinase family. This protein is an important cell cycle checkpoint kinase that phosphorylates; thus, it functions as a regulator of a wide variety of downstream proteins, including tumor suppressor proteins p53 and BRCA1, checkpoint kinase CHK2, checkpoint proteins RAD17 and RAD9, and DNA repair protein NBS1. This protein and the closely related kinase ATR are thought to be master controllers of cell cycle checkpoint signaling pathways that are required for cell response to DNA damage and for genome stability. Mutations in this gene are associated with ataxia telangiectasia, an autosomal recessive disorder.

For Research Use Only

Thank you for your recent purchase.
 If you would like to learn more about antibodies, please visit www.elabscience.com.

**Focus on your research
 Service for life science**

Applications:WB-Western Blot IHC-Immunohistochemistry IF-Immunofluorescence IP-Immunoprecipitation FC-Flow cytometry ChIP-Chromatin Immunoprecipitation Reactivity: H-Human R-Rat M-Mouse Mk-Monkey Dg-Dog Ch-Chicken Hm-Hamster Rb-Rabbit Sh-Sheep Pg-Pig Z-Zebrafish X-Xenopus C-Cow.