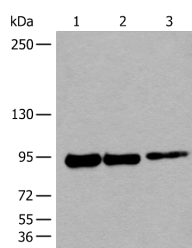


## PIBF1 Polyclonal Antibody

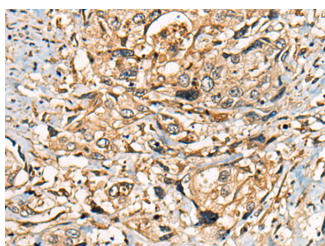
<b>Catalog No.</b>	E-AB-19632	<b>Reactivity</b>	H
<b>Storage</b>	Store at -20°C. Avoid freeze / thaw cycles.	<b>Host</b>	Rabbit
<b>Applications</b>	WB,IHC,ELISA	<b>Isotype</b>	IgG

**Note:** Centrifuge before opening to ensure complete recovery of vial contents.

### Images



Western blot analysis of 293T cell lysates using PIBF1 Polyclonal Antibody at dilution of 1:250



Immunohistochemistry of paraffin-embedded Human prostate cancer tissue using PIBF1 Polyclonal Antibody at dilution of 1:25(×200)

### Immunogen Information

<b>Immunogen</b>	Synthetic peptide of human PIBF1
<b>Gene Accession</b>	NP006337
<b>Swissprot</b>	Q8WXW3
<b>Synonyms</b>	C13orf24,PIBF 1,PIBF,PIBF1,PIBF1

### Product Information

<b>Calculated MW</b>	90 kDa
<b>Observed MW</b>	Refer to figures
<b>Buffer</b>	PBS with 0.05% NaN3 and 40% Glycerol,pH7.4
<b>Purify</b>	Antigen affinity purification
<b>Dilution</b>	WB 1:500-1:2000, IHC 1:10-1:50, ELISA 1:5000-1:10000

### Background

Progesterone-induced-blocking factor 1 is a protein that in humans is encoded by the PIBF1 gene. It has been shown to localize to the centrosome and has also been named CEP90. Mediator of progesterone that by acting on the phospholipase A2 enzyme interferes with arachidonic acid metabolism, induces a Th2 biased immune response, and by controlling NK activity exerts an anti-abortive effect.

#### For Research Use Only

Thank you for your recent purchase.  
 If you would like to learn more about antibodies, please visit [www.elabscience.com](http://www.elabscience.com).

**Focus on your research  
 Service for life science**

Applications:WB-Western Blot IHC-Immunohistochemistry IF-Immunofluorescence IP-Immunoprecipitation FC-Flow cytometry ChIP-Chromatin Immunoprecipitation Reactivity: H-Human R-Rat M-Mouse Mk-Monkey Dg-Dog Ch-Chicken Hm-Hamster Rb-Rabbit Sh-Sheep Pg-Pig Z-Zebrafish X-Xenopus C-Cow.