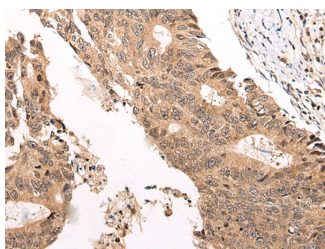


CHAMP1 Polyclonal Antibody

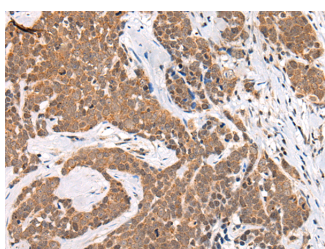
| | | | |
|---------------------|---------------------------------------------|-------------------|--------|
| Catalog No. | E-AB-19634 | Reactivity | H,M |
| Storage | Store at -20°C. Avoid freeze / thaw cycles. | Host | Rabbit |
| Applications | IHC,ELISA | Isotype | IgG |

Note: Centrifuge before opening to ensure complete recovery of vial contents.

Images



Immunohistochemistry of paraffin-embedded Human colorectal cancer tissue using CHAMP1 Polyclonal Antibody at dilution of 1:40(×200)



Immunohistochemistry of paraffin-embedded Human thyroid cancer tissue using CHAMP1 Polyclonal Antibody at dilution of 1:40(×200)

Immunogen Information

| | |
|-----------------------|----------------------------------------------------------------------------------|
| Immunogen | Synthetic peptide of human CHAMP1 |
| Gene Accession | NP115812 |
| Swissprot | Q96JM3 |
| Synonyms | C13orf8,CAMP,CHAMP,CHAMP1,CHAP1,FLJ90413,KIAA1802,Zinc finger protein 828,ZNF828 |

Product Information

| | |
|-----------------|--------------------------------------------------------|
| Buffer | PBS with 0.05% NaN ₃ and 40% Glycerol,pH7.4 |
| Purify | Antigen affinity purification |
| Dilution | IHC 1:30-1:150, ELISA 1:5000-1:10000 |

Background

CHAMP1 (chromosome alignment maintaining phosphoprotein 1), also known as ZNF828 or C13orf8, is a 812 amino acid protein containing one C2H2-type zinc finger. CHAMP1 is required for the proper alignment of chromosomes during metaphase, undergoing CDK1-dependent phosphorylation at multiple sites during mitosis. The phosphorylation counteracts the negative chromosomal alignment regulation of the zinc-finger domain of CHAMP1. One region of CHAMP1, the FPE region, is responsible for spindle and kinetochore localization, which is essential for proper chromosome alignment. CHAMP1 interacts with MAD2L2, PGOZ, CBX1, CBX3 and CBX5, and may recruit CENPE and CENPF to the kinetochore. The CHAMP1 gene is located on chromosome 13 and is conserved in chimpanzee, Rhesus monkey, dog, cow, mouse, rat and chicken.

For Research Use Only

Thank you for your recent purchase.
 If you would like to learn more about antibodies, please visit www.elabscience.com.

**Focus on your research
 Service for life science**

Applications:WB-Western Blot IHC-Immunohistochemistry IF-Immunofluorescence IP-Immunoprecipitation FC-Flow cytometry ChIP-Chromatin Immunoprecipitation Reactivity: H-Human R-Rat M-Mouse Mk-Monkey Dg-Dog Ch-Chicken Hm-Hamster Rb-Rabbit Sh-Sheep Pg-Pig Z-Zebrafish X-Xenopus C-Cow.