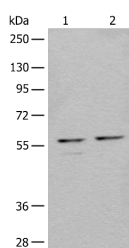


## URI1 Polyclonal Antibody

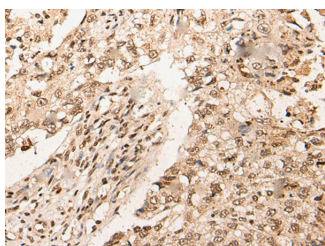
<b>Catalog No.</b>	E-AB-19640	<b>Reactivity</b>	H,M
<b>Storage</b>	Store at -20°C. Avoid freeze / thaw cycles.	<b>Host</b>	Rabbit
<b>Applications</b>	WB,IHC,ELISA	<b>Isotype</b>	IgG

**Note:** Centrifuge before opening to ensure complete recovery of vial contents.

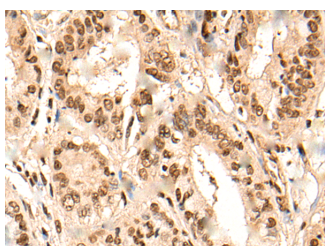
### Images



Western blot analysis of 293T cell lysates using URI1 Polyclonal Antibody at dilution of 1:450



Immunohistochemistry of paraffin-embedded Human lung cancer tissue using URI1 Polyclonal Antibody at dilution of 1:45(x200)



Immunohistochemistry of paraffin-embedded Human liver cancer tissue using URI1 Polyclonal Antibody at dilution of 1:45(x200)

### Immunogen Information

<b>Immunogen</b>	Synthetic peptide of human URI1
<b>Gene Accession</b>	NP003787
<b>Swissprot</b>	O94763
<b>Synonyms</b>	Chromosome 19 open reading frame 2,NNX3 protein,PPP1R19,Protein NNX3,RMP,URI1

### Product Information

<b>Calculated MW</b>	60 kDa
<b>Observed MW</b>	Refer to figures
<b>Buffer</b>	PBS with 0.05% NaN <sub>3</sub> and 40% Glycerol,pH7.4
<b>Purify</b>	Antigen affinity purification
<b>Dilution</b>	WB 1:500-1:2000, IHC 1:30-1:150, ELISA 1:5000-1:10000

### Background

This gene encodes member of the prefoldin family of molecular chaperones. The encoded protein functions as a scaffolding protein and plays roles in ubiquitination and transcription, in part through interactions with the RNA polymerase II subunit RPB5. This gene may play a role in multiple malignancies including ovarian cancer and hepatocellular carcinoma. Alternatively spliced transcript variants encoding multiple isoforms have been observed for this gene, and a pseudogene of this gene is located on the long arm of chromosome 22.

#### For Research Use Only

Thank you for your recent purchase.  
 If you would like to learn more about antibodies, please visit [www.elabscience.com](http://www.elabscience.com).

**Focus on your research  
 Service for life science**

Applications:WB-Western Blot IHC-Immunohistochemistry IF-Immunofluorescence IP-Immunoprecipitation FC-Flow cytometry ChIP-Chromatin Immunoprecipitation Reactivity: H-Human R-Rat M-Mouse Mk-Monkey Dg-Dog Ch-Chicken Hm-Hamster Rb-Rabbit Sh-Sheep Pg-Pig Z-Zebrafish X-Xenopus C-Cow.