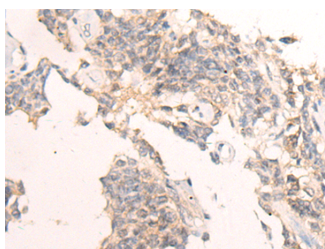


## IBA57 Polyclonal Antibody

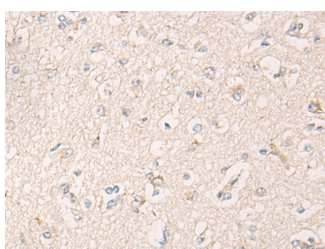
<b>Catalog No.</b>	E-AB-19641	<b>Reactivity</b>	H
<b>Storage</b>	Store at -20°C. Avoid freeze / thaw cycles.	<b>Host</b>	Rabbit
<b>Applications</b>	IHC,ELISA	<b>Isotype</b>	IgG

**Note:** Centrifuge before opening to ensure complete recovery of vial contents.

### Images



Immunohistochemistry of paraffin-embedded Human ovarian cancer tissue using IBA57 Polyclonal Antibody at dilution of 1:65(×200)



Immunohistochemistry of paraffin-embedded Human brain tissue using IBA57 Polyclonal Antibody at dilution of 1:65(×200)

### Immunogen Information

<b>Immunogen</b>	Synthetic peptide of human IBA57
<b>Gene Accession</b>	NP001010867
<b>Swissprot</b>	Q5T440
<b>Synonyms</b>	C1orf69,CAF17,FLJ12734,FLJ13849,IBA57,MMDS3,mitochondrial,SPG74

### Product Information

<b>Buffer</b>	PBS with 0.05% NaN <sub>3</sub> and 40% Glycerol,pH7.4
<b>Purify</b>	Antigen affinity purification
<b>Dilution</b>	IHC 1:30-1:150, ELISA 1:5000-1:10000

### Background

The protein encoded by this gene localizes to the mitochondrion and is part of the iron-sulfur cluster assembly pathway. The encoded protein functions late in the biosynthesis of mitochondrial 4Fe-4S proteins. Defects in this gene have been associated with autosomal recessive spastic paraplegia-74 and with multiple mitochondrial dysfunctions syndrome-3. Two transcript variants encoding different isoforms have been found for this gene. The smaller isoform is not likely to be localized to the mitochondrion since it lacks the amino-terminal transit peptide.

#### For Research Use Only

Thank you for your recent purchase.  
 If you would like to learn more about antibodies, please visit [www.elabscience.com](http://www.elabscience.com).

**Focus on your research  
 Service for life science**

Applications:WB-Western Blot IHC-Immunohistochemistry IF-Immunofluorescence IP-Immunoprecipitation FC-Flow cytometry ChIP-Chromatin Immunoprecipitation Reactivity: H-Human R-Rat M-Mouse Mk-Monkey Dg-Dog Ch-Chicken Hm-Hamster Rb-Rabbit Sh-Sheep Pg-Pig Z-Zebrafish X-Xenopus C-Cow.