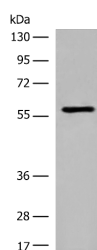


M1AP Polyclonal Antibody

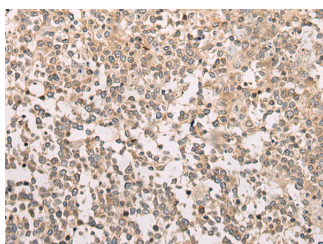
Catalog No.	E-AB-19644	Reactivity	H
Storage	Store at -20°C. Avoid freeze / thaw cycles.	Host	Rabbit
Applications	WB,IHC,ELISA	Isotype	IgG

Note: Centrifuge before opening to ensure complete recovery of vial contents.

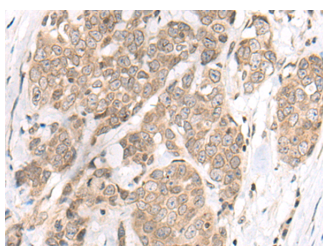
Images



Western blot analysis of Jurkat cell lysate using M1AP Polyclonal Antibody at dilution of 1:600



Immunohistochemistry of paraffin-embedded Human tonsil tissue using M1AP Polyclonal Antibody at dilution of 1:80(×200)



Immunohistochemistry of paraffin-embedded Human thyroid cancer tissue using M1AP Polyclonal Antibody at dilution of 1:80(×200)

Immunogen Information

Immunogen	Synthetic peptide of human M1AP
Gene Accession	NP620159
Swissprot	Q8TC57
Synonyms	C2orf65,CB065,Chromosome 2 open reading frame 65,D6Mm5e,Uncharacterized protein C2orf65

Product Information

Calculated MW	59 kDa
Observed MW	Refer to figures
Buffer	PBS with 0.05% NaN3 and 40% Glycerol,pH7.4
Purify	Antigen affinity purification
Dilution	WB 1:500-1:2000, IHC 1:50-1:300, ELISA 1:5000-1:10000

Background

This gene encodes a protein that is likely to function in progression of meiosis. A similar protein in mouse plays a role in gametogenesis in both sexes. Alternate splicing results in multiple transcript variants encoding different isoforms.

For Research Use Only

Thank you for your recent purchase.
 If you would like to learn more about antibodies, please visit www.elabscience.com.

**Focus on your research
 Service for life science**

Applications:WB-Western Blot IHC-Immunohistochemistry IF-Immunofluorescence IP-Immunoprecipitation FC-Flow cytometry ChIP-Chromatin Immunoprecipitation Reactivity: H-Human R-Rat M-Mouse Mk-Monkey Dg-Dog Ch-Chicken Hm-Hamster Rb-Rabbit Sh-Sheep Pg-Pig Z-Zebrafish X-Xenopus C-Cow.