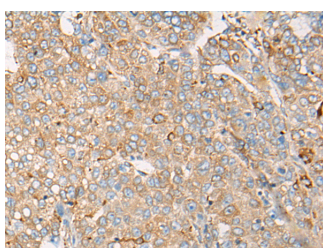


CAPN9 Polyclonal Antibody

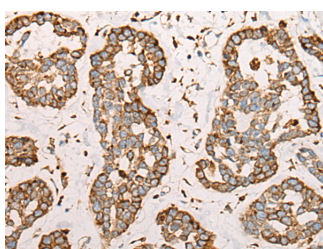
Catalog No.	E-AB-19659	Reactivity	H,M,R
Storage	Store at -20°C. Avoid freeze / thaw cycles.	Host	Rabbit
Applications	IHC,ELISA	Isotype	IgG

Note: Centrifuge before opening to ensure complete recovery of vial contents.

Images



Immunohistochemistry of paraffin-embedded Human liver cancer tissue using CAPN9 Polyclonal Antibody at dilution of 1:45(×200)



Immunohistochemistry of paraffin-embedded Human esophagus cancer tissue using CAPN9 Polyclonal Antibody at dilution of 1:45(×200)

Immunogen Information

Immunogen	Synthetic peptide of human CAPN9
Gene Accession	NP006606
Swissprot	O14815
Synonyms	Calpain-9,Calpain9,CAN9,CAPN 9,CAPN9,CG36 protein,nCL4,New calpain 4

Product Information

Buffer	PBS with 0.05% NaN3 and 40% Glycerol,pH7.4
Purify	Antigen affinity purification
Dilution	IHC 1:30-1:150, ELISA 1:5000-1:10000

Background

Calpains are ubiquitous, well-conserved family of calcium-dependent, cysteine proteases. The calpain proteins are heterodimers consisting of an invariant small subunit and variable large subunits. The large subunit possesses a cysteine protease domain, and both subunits possess calcium-binding domains. Calpains have been implicated in neurodegenerative processes, as their activation can be triggered by calcium influx and oxidative stress. The protein encoded by this gene is expressed predominantly in stomach and small intestine and may have specialized functions in the digestive tract. This gene is thought to be associated with gastric cancer. Multiple alternatively spliced transcript variants encoding different isoforms have been found for this gene. CAPN9 (Calpain 9) is a Protein Coding gene. Diseases associated with CAPN9 include Gastric Cancer. Among its related pathways are Degradation of the extracellular matrix and Arrhythmogenic right ventricular cardiomyopathy (ARVC). GO annotations related to this gene include calcium ion binding and calcium-dependent cysteine-type endopeptidase activity. An important paralog of this gene is CAPN3.

For Research Use Only

Thank you for your recent purchase.
 If you would like to learn more about antibodies, please visit www.elabscience.com.

**Focus on your research
 Service for life science**

Applications:WB-Western Blot IHC-Immunohistochemistry IF-Immunofluorescence IP-Immunoprecipitation FC-Flow cytometry ChIP-Chromatin Immunoprecipitation Reactivity: H-Human R-Rat M-Mouse Mk-Monkey Dg-Dog Ch-Chicken Hm-Hamster Rb-Rabbit Sh-Sheep Pg-Pig Z-Zebrafish X-Xenopus C-Cow.