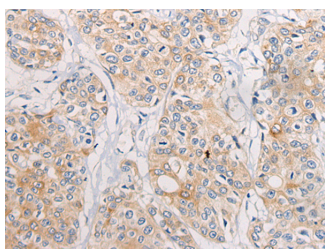


CPD Polyclonal Antibody

| | | | |
|---------------------|---------------------------------------------|-------------------|--------|
| Catalog No. | E-AB-19662 | Reactivity | H |
| Storage | Store at -20°C. Avoid freeze / thaw cycles. | Host | Rabbit |
| Applications | IHC,ELISA | Isotype | IgG |

Note: Centrifuge before opening to ensure complete recovery of vial contents.

Images



Immunohistochemistry of paraffin-embedded Human prostate cancer tissue using CPD Polyclonal Antibody at dilution of 1:70(×200)

Immunogen Information

| | |
|-----------------------|-----------------------------------------------------------|
| Immunogen | Synthetic peptide of human CPD |
| Gene Accession | NP001295 |
| Swissprot | O75976 |
| Synonyms | Carboxypeptidase D,CBPD,Cpd,gp180 ,Metalloproteinase D |

Product Information

| | |
|-----------------|--------------------------------------------------------|
| Buffer | PBS with 0.05% NaN ₃ and 40% Glycerol,pH7.4 |
| Purify | Antigen affinity purification |
| Dilution | IHC 1:40-1:200, ELISA 1:5000-1:10000 |

Background

The metalloproteinase family of enzymes is divided into 2 subfamilies based on sequence similarities. The pancreatic carboxypeptidase-like and the regulatory B-type carboxypeptidase subfamilies. Carboxypeptidase D has been identified as a regulatory B-type carboxypeptidase. CPD is a homolog of duck gp180, a hepatitis B virus-binding protein. Transcript variants utilizing alternative polyadenylation signals exist for this gene.

For Research Use Only

Thank you for your recent purchase.
 If you would like to learn more about antibodies, please visit www.elabscience.com.

**Focus on your research
 Service for life science**

Applications:WB-Western Blot IHC-Immunohistochemistry IF-Immunofluorescence IP-Immunoprecipitation FC-Flow cytometry ChIP-Chromatin Immunoprecipitation Reactivity: H-Human R-Rat M-Mouse Mk-Monkey Dg-Dog Ch-Chicken Hm-Hamster Rb-Rabbit Sh-Sheep Pg-Pig Z-Zebrafish X-Xenopus C-Cow.