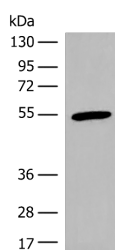


## CIR1 Polyclonal Antibody

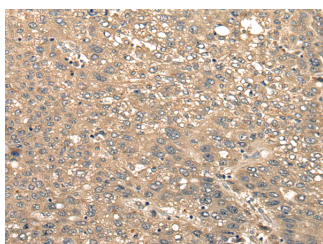
<b>Catalog No.</b>	E-AB-19666	<b>Reactivity</b>	H
<b>Storage</b>	Store at -20°C. Avoid freeze / thaw cycles.	<b>Host</b>	Rabbit
<b>Applications</b>	WB,IHC,ELISA	<b>Isotype</b>	IgG

**Note:** Centrifuge before opening to ensure complete recovery of vial contents.

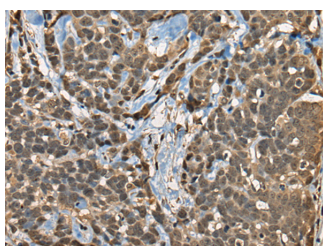
### Images



Western blot analysis of Human heart tissue lysate using CIR1 Polyclonal Antibody at dilution of 1:600



Immunohistochemistry of paraffin-embedded Human liver cancer tissue using CIR1 Polyclonal Antibody at dilution of 1:40(x200)



Immunohistochemistry of paraffin-embedded Human thyroid cancer tissue using CIR1 Polyclonal Antibody at dilution of 1:40(x200)

### Immunogen Information

<b>Immunogen</b>	Synthetic peptide of human CIR1
<b>Gene Accession</b>	NP004873
<b>Swissprot</b>	Q86X95
<b>Synonyms</b>	CIR,Recepin

### Product Information

<b>Calculated MW</b>	52 kDa
<b>Observed MW</b>	Refer to figures
<b>Buffer</b>	PBS with 0.05% NaN <sub>3</sub> and 40% Glycerol,pH7.4
<b>Purify</b>	Antigen affinity purification
<b>Dilution</b>	WB 1:500-1:2000, IHC 1:30-1:150, ELISA 1:5000-1:10000

### Background

May modulate splice site selection during alternative splicing of pre-mRNAs (By similarity). Regulates transcription and acts as corepressor for RBPJ. Recruits RBPJ to the Sin3-histone deacetylase complex (HDAC). Required for RBPJ-mediated repression of transcription.

#### For Research Use Only

Thank you for your recent purchase.  
 If you would like to learn more about antibodies, please visit [www.elabscience.com](http://www.elabscience.com).

**Focus on your research**  
**Service for life science**

Applications:WB-Western Blot IHC-Immunohistochemistry IF-Immunofluorescence IP-Immunoprecipitation FC-Flow cytometry ChIP-Chromatin Immunoprecipitation Reactivity: H-Human R-Rat M-Mouse Mk-Monkey Dg-Dog Ch-Chicken Hm-Hamster Rb-Rabbit Sh-Sheep Pg-Pig Z-Zebrafish X-Xenopus C-Cow.