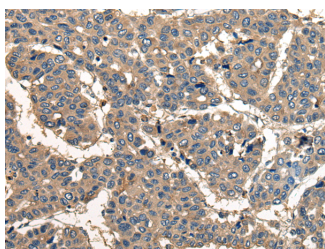


CORO1B Polyclonal Antibody

Catalog No.	E-AB-19721	Reactivity	H,M,R
Storage	Store at -20°C. Avoid freeze / thaw cycles.	Host	Rabbit
Applications	IHC,ELISA	Isotype	IgG

Note: Centrifuge before opening to ensure complete recovery of vial contents.

Images



Immunohistochemistry of paraffin-embedded Human liver cancer tissue using CORO1B Polyclonal Antibody at dilution of 1:40(×200)

Immunogen Information

Immunogen	Synthetic peptide of human CORO1B
Gene Accession	NP065174
Swissprot	Q9BR76
Synonyms	COR1B,CORO 1B,CORO1B,Coronin 1B,Coronin 2,Coronin actin binding protein 1B,Coronin-1B,Coronin-2,Coronin 1B,Coronin2,DKFZP762I166,OTTHUM P00000236823

Product Information

Buffer	PBS with 0.05% NaN ₃ and 40% Glycerol,pH7.4
Purify	Antigen affinity purification
Dilution	IHC 1:30-1:150, ELISA 1:5000-1:10000

Background

Members of the coronin family, such as CORO1B, are WD repeat-containing actin-binding proteins that regulate cell motility (Cai et al., 2005 [PubMed 16027158]). Regulates leading edge dynamics and cell motility in fibroblasts. May be involved in cytokinesis and signal transduction (By similarity).

For Research Use Only

Thank you for your recent purchase.

If you would like to learn more about antibodies, please visit www.elabscience.com.

**Focus on your research
 Service for life science**

Applications:WB-Western Blot IHC-Immunohistochemistry IF-Immunofluorescence IP-Immunoprecipitation FC-Flow cytometry ChIP-Chromatin Immunoprecipitation Reactivity: H-Human R-Rat M-Mouse Mk-Monkey Dg-Dog Ch-Chicken Hm-Hamster Rb-Rabbit Sh-Sheep Pg-Pig Z-Zebrafish X-Xenopus C-Cow.