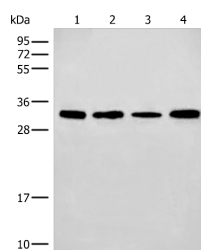


## ERCC1 Polyclonal Antibody

<b>Catalog No.</b>	E-AB-19768	<b>Reactivity</b>	H,M
<b>Storage</b>	Store at -20°C. Avoid freeze / thaw cycles.	<b>Host</b>	Rabbit
<b>Applications</b>	WB,ELISA	<b>Isotype</b>	IgG

**Note:** Centrifuge before opening to ensure complete recovery of vial contents.

### Images



Western blot analysis of 293T and NIH/3T3 cell Mouse liver tissue lysates using ERCC1 Polyclonal Antibody at dilution of 1:600

### Immunogen Information

<b>Immunogen</b>	Synthetic peptide of human ERCC1
<b>Gene Accession</b>	NP001974
<b>Swissprot</b>	P07992
<b>Synonyms</b>	COFS 4,COFS4,ERCC 1,ERCC1,ERCC1,Excision repair protein,RAD 10,RAD10,UV 20,UV20

### Product Information

<b>Calculated MW</b>	33 kDa
<b>Observed MW</b>	Refer to figures
<b>Buffer</b>	PBS with 0.05% NaN <sub>3</sub> and 40% Glycerol,pH7.4
<b>Purify</b>	Antigen affinity purification
<b>Dilution</b>	WB 1:500-1:2000, ELISA 1:5000-1:10000

### Background

Excision Repair Cross Complementing 1 (ERCC1) is a structure-specific endonuclease that is responsible for the 5'-incision during DNA repair. It forms a complex with ERCC11,XPF and ERCC4,which are required in both recombinatorial repair and nucleotide excision repair. It has been found that ERCC1,together with RRM1,are determinants of survival after surgical treatment of early-stage,non-small-cell lung cancer. (Ref: Simon,ER. 2005)

#### For Research Use Only

Thank you for your recent purchase.  
 If you would like to learn more about antibodies,please visit [www.elabscience.com](http://www.elabscience.com).

**Focus on your research  
 Service for life science**

Applications:WB-Western Blot IHC-Immunohistochemistry IF-Immunofluorescence IP-Immunoprecipitation FC-Flow cytometry ChIP-Chromatin Immunoprecipitation Reactivity: H-Human R-Rat M-Mouse Mk-Monkey Dg-Dog Ch-Chicken Hm-Hamster Rb-Rabbit Sh-Sheep Pg-Pig Z-Zebrafish X-Xenopus C-Cow.