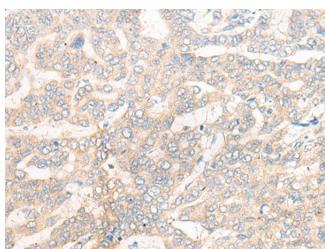


## CYB5R3 Polyclonal Antibody

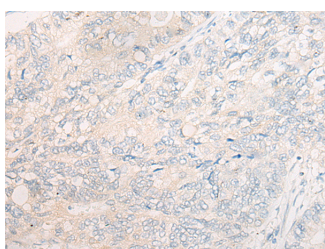
<b>Catalog No.</b>	E-AB-19777	<b>Reactivity</b>	H,M,R
<b>Storage</b>	Store at -20°C. Avoid freeze / thaw cycles.	<b>Host</b>	Rabbit
<b>Applications</b>	IHC,ELISA	<b>Isotype</b>	IgG

**Note:** Centrifuge before opening to ensure complete recovery of vial contents.

### Images



Immunohistochemistry of paraffin-embedded Human liver cancer tissue using CYB5R3 Polyclonal Antibody at dilution of 1:50(×200)



Immunohistochemistry of paraffin-embedded Human gastric cancer tissue using CYB5R3 Polyclonal Antibody at dilution of 1:50(×200)

### Immunogen Information

<b>Immunogen</b>	Synthetic peptide of human CYB5R3
<b>Gene Accession</b>	NP000389
<b>Swissprot</b>	P00387
<b>Synonyms</b>	B5R,Cyb5r3,NADH-cytochrome b5 reductase 3 soluble form,NB5R3

### Product Information

<b>Buffer</b>	PBS with 0.05% NaN <sub>3</sub> and 40% Glycerol,pH7.4
<b>Purify</b>	Antigen affinity purification
<b>Dilution</b>	IHC 1:30-1:150, ELISA 1:5000-1:10000

### Background

CYB5R3,also named as DIA1 and B5R,belongs to the flavoprotein pyridine nucleotide cytochrome reductase family. It plays an essential role in the mitochondrial metabolism by its contribution to cellular redox homeostasis. Overstimulation of CYB5R3 associated with lipid rafts can account for the overshoot of plasma membrane-focalized superoxide anion production that triggers the entry of CGN in the irreversible phase of apoptosis.

#### For Research Use Only

Thank you for your recent purchase.  
 If you would like to learn more about antibodies,please visit [www.elabscience.com](http://www.elabscience.com).

**Focus on your research  
 Service for life science**

Applications:WB-Western Blot IHC-Immunohistochemistry IF-Immunofluorescence IP-Immunoprecipitation FC-Flow cytometry ChIP-Chromatin Immunoprecipitation Reactivity: H-Human R-Rat M-Mouse Mk-Monkey Dg-Dog Ch-Chicken Hm-Hamster Rb-Rabbit Sh-Sheep Pg-Pig Z-Zebrafish X-Xenopus C-Cow.