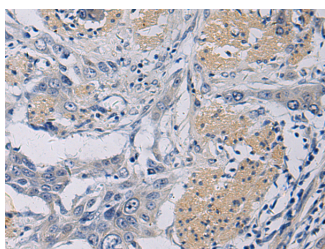


## KLF1 Polyclonal Antibody

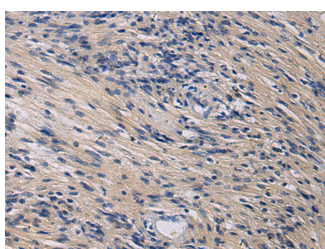
<b>Catalog No.</b>	E-AB-19799	<b>Reactivity</b>	H
<b>Storage</b>	Store at -20°C. Avoid freeze / thaw cycles.	<b>Host</b>	Rabbit
<b>Applications</b>	IHC,ELISA	<b>Isotype</b>	IgG

**Note:** Centrifuge before opening to ensure complete recovery of vial contents.

### Images



Immunohistochemistry of paraffin-embedded Human esophagus cancer tissue using KLF1 Polyclonal Antibody at dilution of 1:35(×200)



Immunohistochemistry of paraffin-embedded Human brain tissue using KLF1 Polyclonal Antibody at dilution of 1:35(×200)

### Immunogen Information

<b>Immunogen</b>	Synthetic peptide of human KLF1
<b>Gene Accession</b>	NP006554
<b>Swissprot</b>	Q13351
<b>Synonyms</b>	CDAN4,EKLF,EKLF PEN,HBFQTL6,INLU,Klf1,KLF1,Kruppel-like factor 1

### Product Information

<b>Buffer</b>	PBS with 0.05% NaN <sub>3</sub> and 40% Glycerol,pH7.4
<b>Purify</b>	Antigen affinity purification
<b>Dilution</b>	IHC 1:50-1:100, ELISA 1:2000-1:5000

### Background

This gene encodes a hematopoietic-specific transcription factor that induces high-level expression of adult beta-globin and other erythroid genes. The zinc-finger protein binds to the DNA sequence CCACACCCT found in the beta hemoglobin promoter. Heterozygous loss-of-function mutations in this gene result in the dominant In(Lu) blood phenotype. KLF1 (Kruppel Like Factor 1) is a Protein Coding gene. Diseases associated with KLF1 include Dyserythropoietic Anemia, Congenital, Type Iv and Hereditary Persistence Of Fetal Hemoglobin-Sickle Cell Disease Syndrome. Among its related pathways are Hematopoietic Stem Cell Differentiation. GO annotations related to this gene include transcription factor activity, sequence-specific DNA binding and core promoter proximal region sequence-specific DNA binding. An important paralog of this gene is KLF4.

#### For Research Use Only

Thank you for your recent purchase.  
 If you would like to learn more about antibodies, please visit [www.elabscience.com](http://www.elabscience.com).

**Focus on your research  
 Service for life science**

Applications:WB-Western Blot IHC-Immunohistochemistry IF-Immunofluorescence IP-Immunoprecipitation FC-Flow cytometry ChIP-Chromatin Immunoprecipitation Reactivity: H-Human R-Rat M-Mouse Mk-Monkey Dg-Dog Ch-Chicken Hm-Hamster Rb-Rabbit Sh-Sheep Pg-Pig Z-Zebrafish X-Xenopus C-Cow.