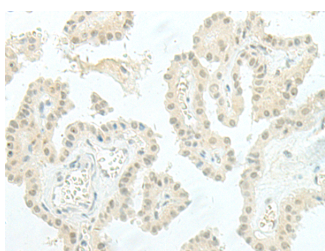


ESRP2 Polyclonal Antibody

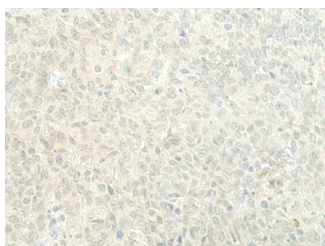
Catalog No.	E-AB-19822	Reactivity	H,M,R
Storage	Store at -20°C. Avoid freeze / thaw cycles.	Host	Rabbit
Applications	IHC,ELISA	Isotype	IgG

Note: Centrifuge before opening to ensure complete recovery of vial contents.

Images



Immunohistochemistry of paraffin-embedded Human thyroid cancer tissue using ESRP2 Polyclonal Antibody at dilution of 1:95(×200)



Immunohistochemistry of paraffin-embedded Human ovarian cancer tissue using ESRP2 Polyclonal Antibody at dilution of 1:95(×200)

Immunogen Information

Immunogen	Synthetic peptide of human ESRP2
Gene Accession	NP079215
Swissprot	Q9H6T0
Synonyms	ESRP 2,ESRP2,ESRP2,FLJ21918,FLJ22248,RBM35 B,RNA-binding protein 35B

Product Information

Buffer	PBS with 0.05% NaN ₃ and 40% Glycerol,pH7.4
Purify	Antigen affinity purification
Dilution	IHC 1:50-1:300, ELISA 1:5000-1:10000

Background

ESRP2 is an epithelial cell-type-specific splicing regulator (Warzecha et al., 2009 [PubMed 19285943]).

For Research Use Only

Thank you for your recent purchase.
 If you would like to learn more about antibodies, please visit www.elabscience.com.

**Focus on your research
 Service for life science**

Applications:WB-Western Blot IHC-Immunohistochemistry IF-Immunofluorescence IP-Immunoprecipitation FC-Flow cytometry ChIP-Chromatin Immunoprecipitation Reactivity: H-Human R-Rat M-Mouse Mk-Monkey Dg-Dog Ch-Chicken Hm-Hamster Rb-Rabbit Sh-Sheep Pg-Pig Z-Zebrafish X-Xenopus C-Cow.