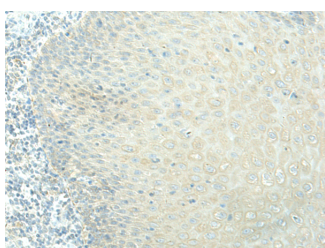


EVI2B Polyclonal Antibody

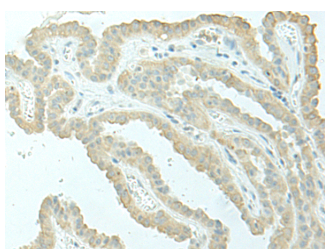
Catalog No.	E-AB-19827	Reactivity	H,M
Storage	Store at -20°C. Avoid freeze / thaw cycles.	Host	Rabbit
Applications	IHC,ELISA	Isotype	IgG

Note: Centrifuge before opening to ensure complete recovery of vial contents.

Images



Immunohistochemistry of paraffin-embedded Human esophagus cancer tissue using EVI2B Polyclonal Antibody at dilution of 1:40(×200)



Immunohistochemistry of paraffin-embedded Human thyroid cancer tissue using EVI2B Polyclonal Antibody at dilution of 1:40(×200)

Immunogen Information

Immunogen	Synthetic peptide of human EVI2B
Gene Accession	NP006486
Swissprot	P34910
Synonyms	CD361,D17S376,EVDB,EVI2B,EVI-2B,Evi2b,EVI2B protein,EVI2B,Protein EVI2B

Product Information

Buffer	PBS with 0.05% NaN ₃ and 40% Glycerol,pH7.4
Purify	Antigen affinity purification
Dilution	IHC 1:40-1:200, ELISA 1:5000-1:10000

Background

EVI2B, also known as CD361. CD361 is a poorly characterized type I transmembrane protein, expressed from one of three genes embedded in intron 27b of the neurofibromatosis type 1 (NF1) gene. The DNA strand that is transcribed to produce CD361 is the complementary one to the strand encoding NF1. Murine homolog to human CD361 is associated with ecotropic viral insertions, which have been implicated in the expression of murine myeloid leukemias. CD361 has been also reported to be involved in melanocyte and keratinocyte differentiation. However, it is expressed mainly in peripheral blood and bone marrow.

For Research Use Only

Thank you for your recent purchase.
 If you would like to learn more about antibodies, please visit www.elabscience.com.

**Focus on your research
 Service for life science**

Applications:WB-Western Blot IHC-Immunohistochemistry IF-Immunofluorescence IP-Immunoprecipitation FC-Flow cytometry ChIP-Chromatin Immunoprecipitation Reactivity: H-Human R-Rat M-Mouse Mk-Monkey Dg-Dog Ch-Chicken Hm-Hamster Rb-Rabbit Sh-Sheep Pg-Pig Z-Zebrafish X-Xenopus C-Cow.