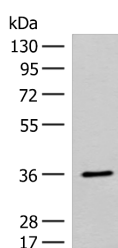


FAM84A Polyclonal Antibody

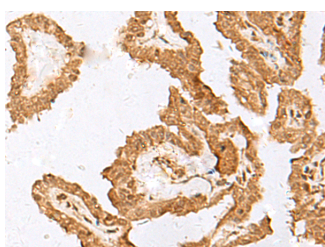
Catalog No.	E-AB-19848	Reactivity	H,M
Storage	Store at -20°C. Avoid freeze / thaw cycles.	Host	Rabbit
Applications	WB,IHC,ELISA	Isotype	IgG

Note: Centrifuge before opening to ensure complete recovery of vial contents.

Images



Western blot analysis of Mouse small intestines tissue lysate using FAM84A Polyclonal Antibody at dilution of 1:300



Immunohistochemistry of paraffin-embedded Human thyroid cancer tissue using FAM84A Polyclonal Antibody at dilution of 1:35(×200)

Immunogen Information

Immunogen	Synthetic peptide of human FAM84A
Gene Accession	NP660158
Swissprot	Q96KN4
Synonyms	FAM 84A,FLJ35392,Neurologic sensory protein 1,NSE 1,NSE1,PP11517,Protein NSE1

Product Information

Calculated MW	32 kDa
Observed MW	Refer to figures
Buffer	PBS with 0.05% NaN ₃ and 40% Glycerol,pH7.4
Purify	Antigen affinity purification
Dilution	WB 1:500-1:2000, IHC 1:40-1:200, ELISA 1:5000-1:10000

Background

FAM84A (Family with sequence similarity 84 member A) was identified in a screen for genes up-regulated in colon cancer. It may play a role in cell migration and has a critical role in the progression of colon cancer.

For Research Use Only

Thank you for your recent purchase.
 If you would like to learn more about antibodies, please visit www.elabscience.com.

**Focus on your research
 Service for life science**

Applications:WB-Western Blot IHC-Immunohistochemistry IF-Immunofluorescence IP-Immunoprecipitation FC-Flow cytometry ChIP-Chromatin Immunoprecipitation Reactivity: H-Human R-Rat M-Mouse Mk-Monkey Dg-Dog Ch-Chicken Hm-Hamster Rb-Rabbit Sh-Sheep Pg-Pig Z-Zebrafish X-Xenopus C-Cow.