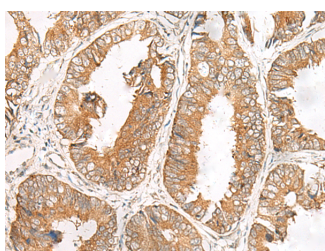


## FERD3L Polyclonal Antibody

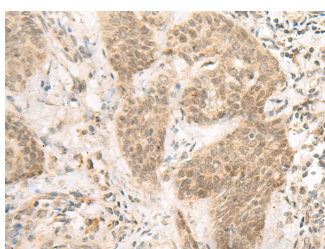
<b>Catalog No.</b>	E-AB-19865	<b>Reactivity</b>	H
<b>Storage</b>	Store at -20°C. Avoid freeze / thaw cycles.	<b>Host</b>	Rabbit
<b>Applications</b>	IHC,ELISA	<b>Isotype</b>	IgG

**Note:** Centrifuge before opening to ensure complete recovery of vial contents.

### Images



Immunohistochemistry of paraffin-embedded Human colorectal cancer tissue using FERD3L Polyclonal Antibody at dilution of 1:85(×200)



Immunohistochemistry of paraffin-embedded Human esophagus cancer tissue using FERD3L Polyclonal Antibody at dilution of 1:85(×200)

### Immunogen Information

<b>Immunogen</b>	Synthetic peptide of human FERD3L
<b>Gene Accession</b>	NP690862
<b>Swissprot</b>	Q96RJ6
<b>Synonyms</b>	FER3L,Ferd3l,MGC119861,N TWIST,NATO3,Nephew of atonal 3,Neuronal twist,NTWIST

### Product Information

<b>Buffer</b>	PBS with 0.05% NaN3 and 40% Glycerol,pH7.4
<b>Purify</b>	Antigen affinity purification
<b>Dilution</b>	IHC 1:50-1:300, ELISA 1:5000-1:10000

### Background

Transcription factor that binds to the E-box and functions as inhibitor of transcription. DNA binding requires dimerization with an E protein. Inhibits transcription activation by ASCL1/MASH1 by sequestering E proteins (By similarity).

#### For Research Use Only

Thank you for your recent purchase.  
 If you would like to learn more about antibodies, please visit [www.elabscience.com](http://www.elabscience.com).

**Focus on your research  
 Service for life science**

Applications:WB-Western Blot IHC-Immunohistochemistry IF-Immunofluorescence IP-Immunoprecipitation FC-Flow cytometry ChIP-  
 Chromatin Immunoprecipitation Reactivity: H-Human R-Rat M-Mouse Mk-Monkey Dg-Dog Ch-Chicken Hm-Hamster Rb-Rabbit Sh-  
 Sheep Pg-Pig Z-Zebrafish X-Xenopus C-Cow.