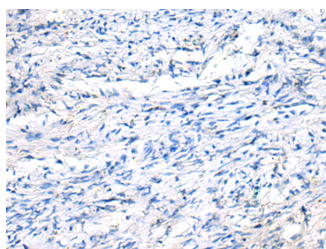


## FGF11 Polyclonal Antibody

|                     |   |                   |        |
|---------------------|---|-------------------|--------|
| <b>Catalog No.</b>  | E-AB-19867                                  | <b>Reactivity</b> | H,M    |
| <b>Storage</b>      | Store at -20°C. Avoid freeze / thaw cycles. | <b>Host</b>       | Rabbit |
| <b>Applications</b> | IHC,ELISA                                   | <b>Isotype</b>    | IgG    |

**Note:** Centrifuge before opening to ensure complete recovery of vial contents.

### Images



Immunohistochemistry of paraffin-embedded Human ovarian cancer tissue using FGF11 Polyclonal Antibody at dilution of 1:50(×200)

### Immunogen Information

|                       |  |
|-----------------------|--|
| <b>Immunogen</b>      | Synthetic peptide of human FGF11   |
| <b>Gene Accession</b> | NP004103   |
| <b>Swissprot</b>      | Q92914   |
| <b>Synonyms</b>       | FGF 11,FGF-11,FGF11,FGF11,FHF3,FHF-3,FHF3,Fibroblast growth factor 11,Fibroblast growth factor homologous factor 3,FLJ16061,MGC102953,MGC45269 |

### Product Information

|                 |  |
|-----------------|--|
| <b>Buffer</b>   | PBS with 0.05% NaN <sub>3</sub> and 40% Glycerol,pH7.4 |
| <b>Purify</b>   | Antigen affinity purification                          |
| <b>Dilution</b> | IHC 1:25-1:50, ELISA 1:5000-1:10000                    |

### Background

The protein encoded by this gene is a member of the fibroblast growth factor (FGF) family. FGF family members possess broad mitogenic and cell survival activities, and are involved in a variety of biological processes, including embryonic development, cell growth, morphogenesis, tissue repair, tumor growth and invasion. The function of this gene has not yet been determined. The expression pattern of the mouse homolog implies a role in nervous system development. Alternative splicing results in multiple transcript variants.FGF11 (Fibroblast Growth Factor 11) is a Protein Coding gene. Among its related pathways are GPCR Pathway and Phospholipase-C Pathway. GO annotations related to this gene include growth factor activity. An important paralog of this gene is FGF12.

#### For Research Use Only

Thank you for your recent purchase.  
 If you would like to learn more about antibodies,please visit [www.elabscience.com](http://www.elabscience.com).

**Focus on your research  
 Service for life science**

Applications:WB-Western Blot IHC-Immunohistochemistry IF-Immunofluorescence IP-Immunoprecipitation FC-Flow cytometry ChIP-Chromatin Immunoprecipitation Reactivity: H-Human R-Rat M-Mouse Mk-Monkey Dg-Dog Ch-Chicken Hm-Hamster Rb-Rabbit Sh-Sheep Pg-Pig Z-Zebrafish X-Xenopus C-Cow.